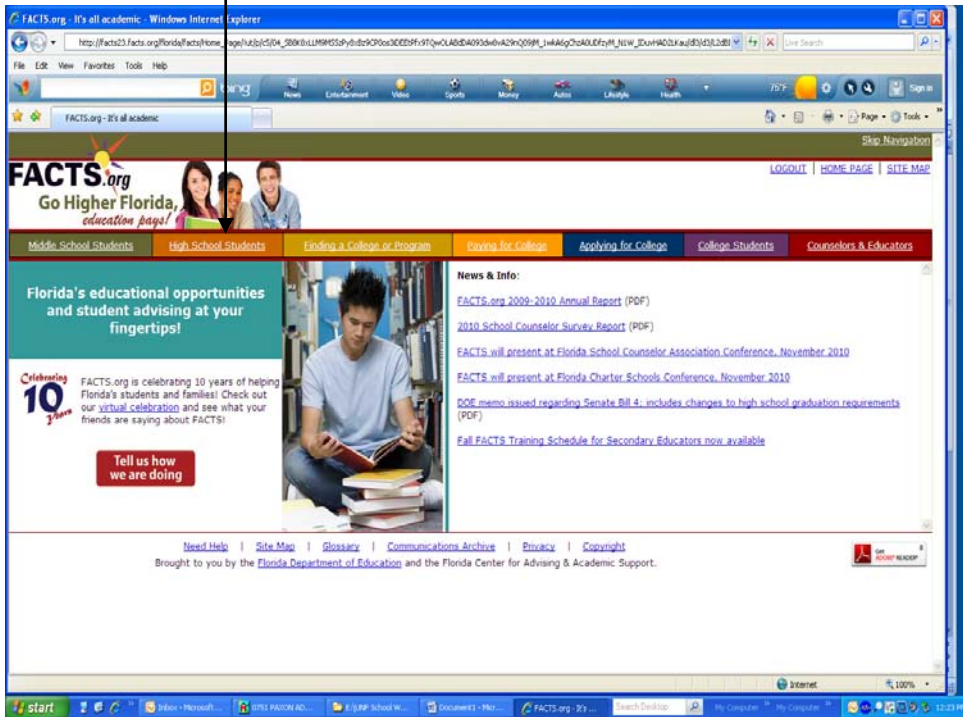


# GUIDE TO COMPLETEING YOUR EPEPS

Stop by your Guidance Counselor's office to get your login and password...or.

Go to [www.FACTS.org](http://www.FACTS.org) and follow the prompts. Have a successful EPEP Session.....

## High School Students



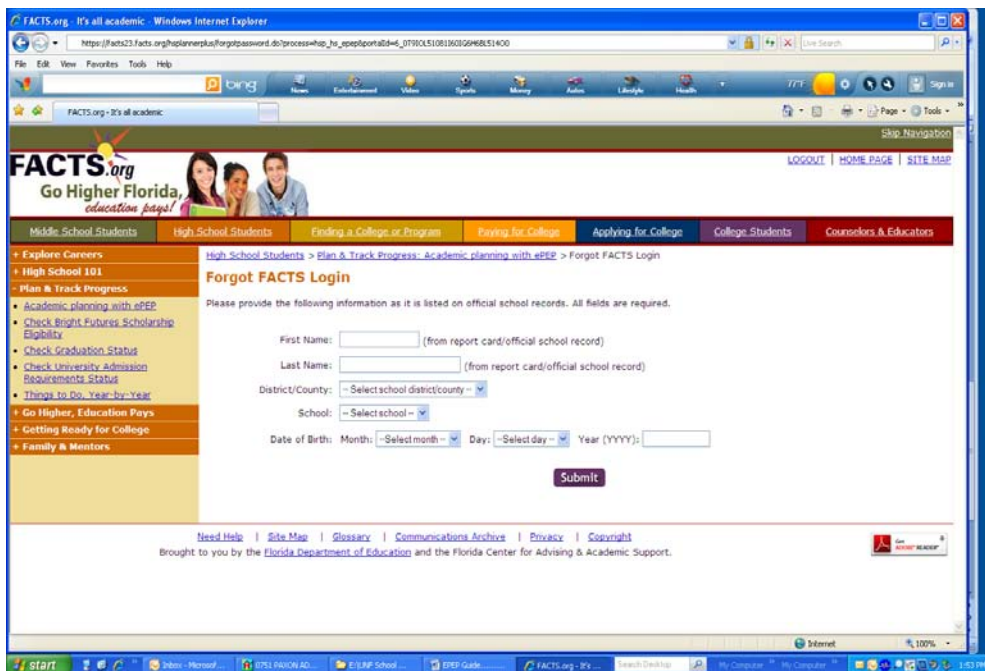


Complete if you know your login and password

or

Forgot Facts Login/Password if you do not have them.

If you have never created a FACTS EPEP click NEW USER

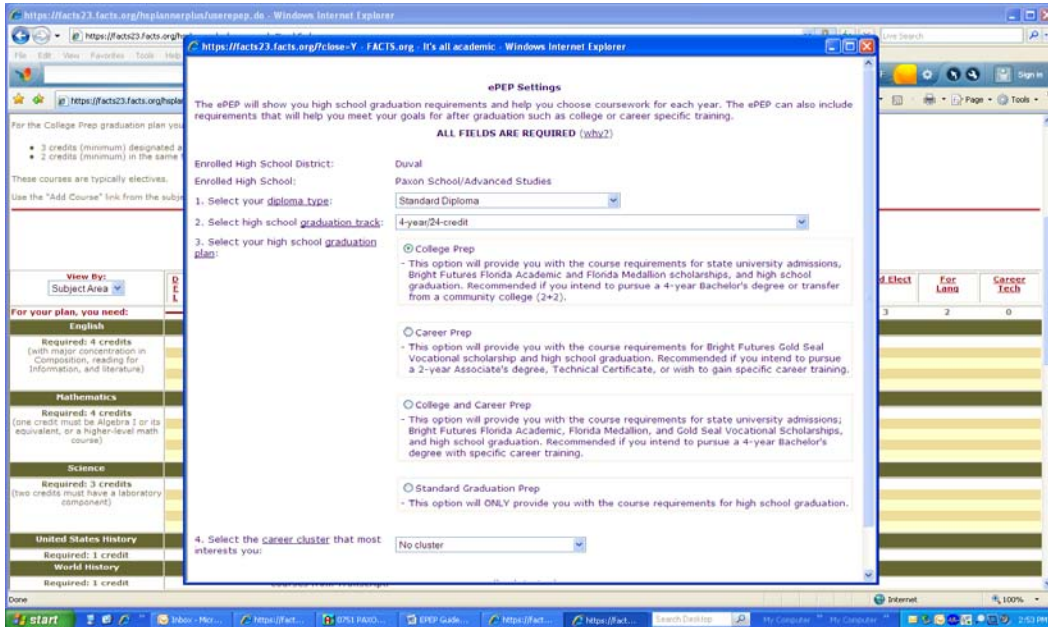


If you forgot your username/password use your social security number with an X at the end for student identifier #.

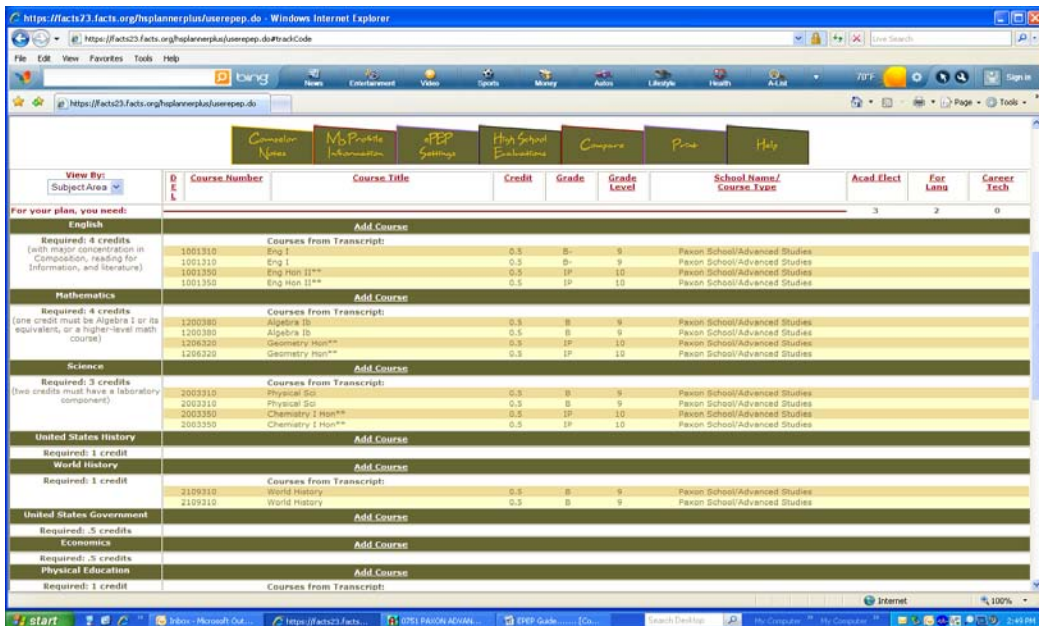
If you are a new user skip to the next slide.

If you are creating a NEW USER go to EPEP settings and input the following:

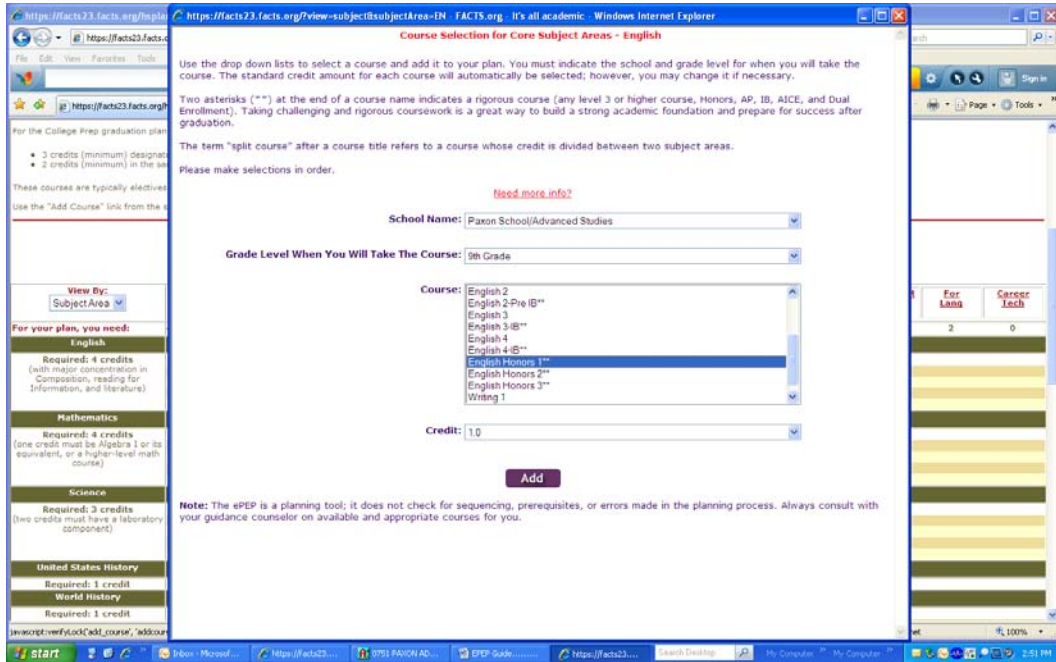
1. Standard Diploma
2. 4yr/24 Credit
3. College Prep
4. No Cluster



View by subject area...



Start adding courses.....from the guide below.... (IB students please select IB/Pre-IB Courses from Course Catalog)



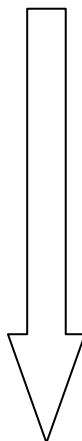
<p><b>English (4Credits)</b></p> <p>9<sup>th</sup> English 1 Honors</p> <p>10<sup>th</sup> English 2 Honors</p> <p>11<sup>th</sup> AP Lang and Comp.</p> <p>12<sup>th</sup> AP Lit and Comp.</p>	<p><b>Math (4 Credits) Option 1</b></p> <p>9<sup>th</sup> Geometry Honors</p> <p>10<sup>th</sup> Algebra II Honors</p> <p>11<sup>th</sup> Pre-Calculus or Analysis of Function</p> <p>12<sup>th</sup> Probability and Statistics or AP Calculus or AP Statistics</p>	<p><b>Social Studies (individual Subjects)</b></p> <p>9<sup>th</sup> AP Human Geography</p> <p>10<sup>th</sup> AP World History</p> <p>11<sup>th</sup> AP US History</p> <p>12<sup>th</sup> American Government Honors or AP Gov</p> <p>12<sup>th</sup> Economics Honors or AP Macro or AP Micro</p>
<p><b>Math (4Credits) Option 2</b></p> <p>9<sup>th</sup> Geometry and Algebra II Honors</p> <p>10<sup>th</sup> Pre Calculus or Analysis of Function</p> <p>11<sup>th</sup> Probability and Statistics or AP Calculus or AP Statistic</p> <p>12<sup>th</sup> Other AP Math not</p>	<p><b>Science (3Credits)</b></p> <p>9<sup>th</sup> Biology 1 Honors</p> <p>10<sup>th</sup> Chemistry 1 Honors and Earth Space Science</p> <p>11<sup>th</sup> Physics 1 Honors or AP Chemistry or AP Biology</p> <p>12<sup>th</sup> Anatomy or other AP Science not completed in 11<sup>th</sup></p>	<p><b>Include 1 credit for PE &amp; 1 credit for Performing Art</b></p> <p><b>Include the following for Electives:</b></p> <p>At least two additional AP's</p> <p>AP European History – 10<sup>th</sup></p> <p>2 Foreign Language – 9<sup>th</sup> &amp; 10<sup>th</sup></p> <p>2 PE's</p> <p>2 Performing Arts</p>

completed in 11 <sup>th</sup> Grade.	Grade.
--------------------------------------	--------

Once you are finished inputting all the courses scroll to the bottom of the page. If you see red lines with words saying *'you do not have enough courses etc...'* you are not finished. Go back and see under what subject area you are missing courses and add them.

The screenshot shows a web browser window displaying a course planning tool. At the top, there is a table of courses with columns for course ID, name, credits, grade, and school. Below this is a 'Summary Evaluation' table with columns for 'Subject Area', 'Required', and 'Planned'. The 'Planned' column for 'English' and 'College Prep Academic Electives' has red lines under the values 0.0 and 0.0 respectively. A white arrow points to the red line under 'College Prep Academic Electives'. To the right of the summary table, there are three red-bordered boxes with text indicating missing requirements: 'You do not have enough planned courses to meet the standard high school graduation requirements; you must have 24 credits (minimum) in specified subject areas for graduation.', 'You do not have enough planned courses to meet the College Prep requirements; you must have 3 credits (minimum) of College Prep academic electives to be eligible for state university admission.', and 'You do not have enough planned courses to meet the College Prep requirements; you must have 2 credits (minimum) of the same foreign language to be eligible for state university admission.'

The finished product should say you have at least 24 courses planned and no red lines with words.....It should look like this...



https://facts23.facts.org/hsplannerplus/worksheet.do?l

File Edit View Favorites Tools Help

bing

https://facts23.facts.org/hsplannerplus/worksheet.do?l

Course ID	Course Name	Units	Grade	Prerequisites	Notes
X119400	AP Spanish History	1.0	10	Paxon School/Advanced Studies	
X098320	Spanish 2	1.0	10	Paxon School/Advanced Studies	
X200340	AP Biology**	1.0	10	Paxon School/Advanced Studies	
X103400	AP Human Geography**	1.0	11	Paxon School/Advanced Studies	
X103370	AP Chemistry**	1.0	11	Paxon School/Advanced Studies	
X130210	Biol 2	1.0	11	Paxon School/Advanced Studies	
X110270	AP Macroeconomics**	0.5	12	Paxon School/Advanced Studies	
X107300	AP Psychology**	1.0	12	Paxon School/Advanced Studies	
<b>Courses from Transcript:</b>					
190300	Driver Ed Class	0.5	A	9	Paxon School/Advanced Studies
070120	French II	0.5	B	9	Paxon School/Advanced Studies
070120	French II	0.5	B	9	Paxon School/Advanced Studies
080200	Health 1-J Hgmt SK	0.5	B	9	Paxon School/Advanced Studies
210930	Adv. R Euro History**	0.5	IP	10	Paxon School/Advanced Studies
210930	Adv. R Euro History**	0.5	IP	10	Paxon School/Advanced Studies
210340	Adv. R Human Geography**	0.5	IP	10	Paxon School/Advanced Studies
210340	Adv. R Human Geography**	0.5	IP	10	Paxon School/Advanced Studies
070130	French III**	0.5	IP	10	Paxon School/Advanced Studies
070130	French III**	0.5	IP	10	Paxon School/Advanced Studies
					11.5 3.0 1.0

Summary Evaluation			
Subject Area	Required	Planned	Comments
English	4.0	4.0	<ul style="list-style-type: none"> <li>You have planned 21.0 rigorous credit(s).</li> <li>AP courses are rigorous courses that provide an opportunity to earn college credit by taking the AP College Board Exam. To see the required exam scores and possible college credit awarded, please see the <b>Credit by Exam Equivalence Chart</b>.</li> <li>Remember, four-year universities have additional requirements concerning grade point average and scores on college entrance exams (SAT/ACT). The coursework you have selected will be considered during admissions decisions; the stronger your coursework the better prepared you will be for success.</li> <li>Use the High School Evaluation tab for a full evaluation of eligibility for graduation, Bright Futures Scholarships, and State University System (SUS) admissions.</li> </ul>
Mathematics	4.0	4.0	
Science	3.0	3.0	
United States History	1.0	1.0	
World History	1.0	1.0	
United States Government	0.5	0.5	
Economics	0.5	0.5	
Physical Education	1.0	2.0	
Fine/Performing Arts	1.0	4.0	
Electives	8.0	10.5	
<b>Total:</b>	<b>24.0</b>	<b>33.0</b>	
College Prep Academic Electives	3.0	11.5	
College Prep Foreign Language	2.0	3.0	
College Prep Workbased Learning	0.0	1.0	

Internet 100%

start | http://facts... | http://facts... | http://facts... | http://facts... | http://facts... | Health Disapp... | My Computer... | My Computer... | 3:10 PM

**CONGRATULATIONS YOU HAVE COMPLETED YOUR EPEP....**