



March 18, 2011

PAW PRINTS

Important Dates



Mar. 22nd	SAC Meeting @ 8:15 a.m.
Mar. 23rd	Early Dismissal @ 2:00
	End of 3rd Quarter
Mar. 24th	Student of the Month @ 2:00
	Adventure to Fitness Fundraiser Due
Mar. 25th	No School - Planning Day
Mar. 28th – Apr. 1st	No School - Spring Break
Apr. 4th	<u>Monday - School Resumes</u>

Coach's Corner

It's almost time...the MILE RUN (8 LAPS)
March 11 - March 24



Please congratulate Cassidy Nettles in Ms. Roberts' 2nd grade class. She ran the mile run in 8:33 and set another school record. This is Cassidy's second trophy score this year. You ROCK Cassidy!



A Note from Ms. Wells

SUCCESS... ALL STUDENTS... ALL STANDARDS



Our next School Advisory Council meeting is scheduled for March 22nd at 8:15 a.m. All stakeholders are invited as we complete the mid-year review of our School Improvement Plan. I look forward to seeing you there!

Kudos, again, to our PTA! They completed hearing screenings without a hitch. Their volunteer spirit is contagious! I encourage you to make contact and play an active role at The Park!

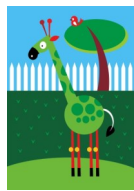
Travel Arrangements

Parents, please make travel arrangements with your child before they come to school. We are unable to take changes over the phone for safety reasons. Any changes in transportation must be made in writing. Thank you!



Kindergarten Corner

Thank you to all our wonderful zoo chaperones for making our educational experience so meaningful! Your assistance was greatly appreciated! A super time was had by all :)



For the safety of our children, please do not drop off students in the parking lot. We ask that you pull up to the drop-off zone in front of the school doors. Also, do not drive your car on the sidewalk. The sidewalk is for walkers and bikers not for vehicles. Let's all model courtesy and safety for our students. Thank you!

Flowers's are blooming!



The CSS Department has created a butterfly garden on the southwest corner of the school campus. Thank you teachers and parents for your donations!

PTA is "Wild About Learning" !!! Join PTA

~Abess Park Elementary PTA~
Sondra Valentine Crygier, President
904-442-8336 or sondra70@bellsouth.net

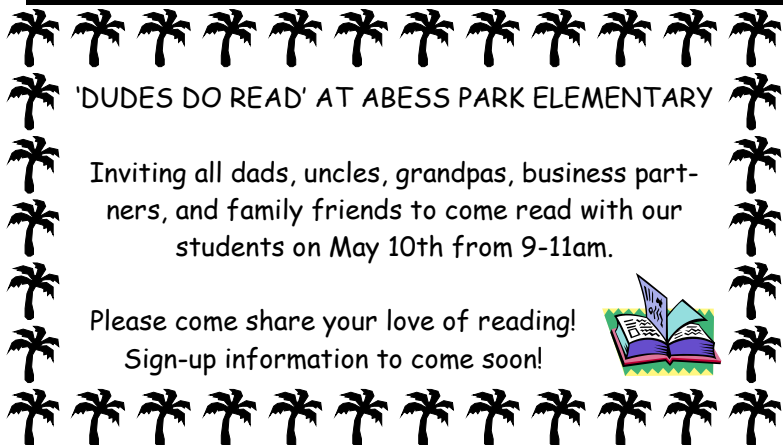
<http://www.ClassConnection.org/AbessparkPTA>

A.P.E. approved volunteers are needed to support PTA
Please contact Sondra Crygier if you would like to volunteer with PTA



Did you know that you can contact the PTA by visiting our website at <http://www.ClassConnection.org/AbessparkPTA> and selecting the CONTACT US button???

How will you help the Abess Park PTA this year?



'DUDES DO READ' AT ABESS PARK ELEMENTARY

Inviting all dads, uncles, grandpas, business partners, and family friends to come read with our students on May 10th from 9-11am.

Please come share your love of reading!
Sign-up information to come soon!



PTA NEWS

Did you know monies raised from the Krispy Kreme Doughnuts fundraiser are used to offset the costs of the *Muffins with Moms* and *Doughnuts with BUDS (Brothers, Uncles, Dads)* celebration? Last year, these events cost over \$300. Thanks to your support, I am excited to say that our PTA will be able to continue this event again this year. Thank you for your support!

**March 24th - Adventure to Fitness fundraiser money due

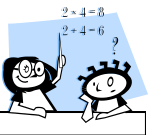
**April 4th - PTA Meeting (6-7pm)
Voting in the 2011-2012 Board

**We are still accepting birthday marquee announcement requests. Forms are located in the foyer and our Abess Park PTA website.



Earthsavers News

WANTED: OLD CELL PHONES AND INK CARTRIDGES! Earthsavers Club is still collecting these items. They can be placed in the baskets on the front counter or on the office counter. Also we will recycle old or broken garmins (GPS) and DS / electronic games. Your old newspapers can be dropped off in the trash bin in the back of the bus loop. In January, we earned \$84.90 in recycled cell phones and ink cartridges! Our trash makes money for Abess Park School Improvements. **SO GET WILD WITH THE ABESS PARK EARTHSAVERS ABOUT CLEANING UP OUR ENVIRONMENT! *Many thanks* to those who have donated items!!**



Parent Volunteers

If you are going on field trips or volunteering at the school, please always have your volunteer card with you along with your picture I.D. Without your card, you are unable to participate in school events.

To ensure the safety of our students, volunteers must complete an application and undergo a criminal background screening, free of charge, conducted by our DCPS department. Once the background screening process is completed, volunteers are issued volunteer cards identifying them as authorized volunteers. You can obtain this application by going on the Duval County website at <http://www.duvalschools.org/>, click on *community*, and then *volunteer information - Apply to be a volunteer online*. You can also pick up a hard copy from the front office. Thank you!!

Abess Park Elementary Summer Camp Registration started: Feb 7th



The registration fee is \$100.00 (non-refundable) Camp Total Cost: \$850.00
Camp starts: June 14th - August 5th, Time: 7:00a.m. until 6:00p.m.
Ages: 4 entering K in the fall up to 6th grade

Attention Parents: Here's the deal!!!!

If you register on or before the 28th of February, you will receive a \$50.00 discount on your final payment for camp.

If you are a returning camper you will also receive your **returning camper discount** and an additional \$10.00 off your final payment.

Abess Park Camp payment schedule

February 7th - \$100.00 deposit due

February 25th - \$125.00

February 28th deadline to receive discount for early registration!

March 11th - \$125.00

March 25th - \$125.00

April 8th - \$125.00

April 29th - \$125.00

May 13th - \$125.00 (if applicable, discount will be taken off this payment)

Camp fees include: field trips, swimming, arts & Crafts, cook-outs, t-shirt, camp carnival and Extended day... (WOW)!!! Reading/math ramp-up....

Don't miss out on the fun.....

Payments may be made by cash, check, or money order. Make check or money order payable to **ABESS PARK ELEMENTARY**.

Name, Address, and Phone number must be listed on the check.

No check over \$300.00 can be accepted.

You can register at the Extended Day counter (in our front foyer)

Monday-Friday between the hours of

7:45a.m. - 8:15a.m. and 4p.m. - 6p.m.

If you have any questions, please feel free to contact

Ms. J. Conaway at (904) 220-1260 or conawayj@duvalschools.org



Patrol News



Patrols are selling a variety of chocolate pretzel rods for \$1.00 in the front foyer before and after school. You may choose from white drizzle, peanut butter drizzle, mini morsels, and toffee crunch!