



Mandarin High School

4831 Greenland Road • Jacksonville, FL 32258

Phone: (904) 260-3911 • Fax: (904) 260-5468

www.duvalschools.org/mhs

Vision Statement: MHS will orient, educate, and graduate every student fully prepared for successful entry to and completion of a post-secondary education.

2010 ~ 2011 School Profile CEEB/School Code: 100769

ADMINISTRATION

Dr. Donna Richardson, Principal	
Bryan Boyer	Assistant Principal
Gary Finger	Assistant Principal
Cynthia Grissett	Assistant Principal
Gerald Hulshult	Curriculum Coordinator
Janetta Lucas	Assistant. Principal
Lisa Moses	Assistant Principal

GUIDANCE STAFF

Diane Dempsey Department Chair/College and Career Counselor	
Peggy Adams	San Jose House/AICE
Julie Besley	Greenland House
Tanu Seymore	St. John's House
Linda Smith	Julington House
Steve Respass	St. Augustine House
Toni Johnson	Records and Transcripts

GRADING SYSTEM

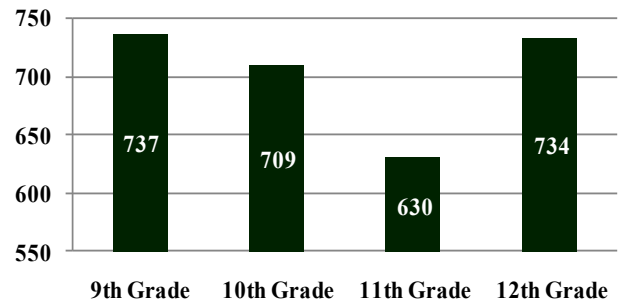
Ltr Grade	Numerical Grade	Quality Pts
A	90 – 100	4
B	80 – 89	3
C	70 – 79	2
D	60 – 69	1
F	Below 60	0

Honors, Pre-AICE, Advanced Placement, AICE, and Dual Enrollment courses are weighted with one additional quality point: A=5, B=4, C=3.

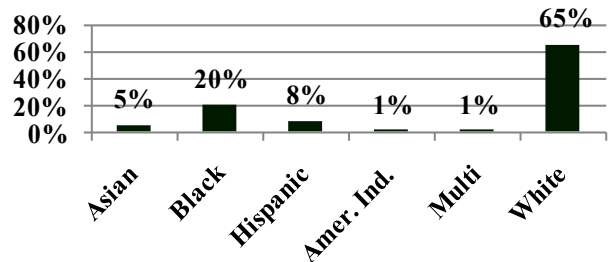
SCHOOL AND DISTRICT

Mandarin High School (MHS) is located on the south side of Jacksonville, Florida in the Duval County Public School System. Comprised of more than 2800 students in grades 9 - 12, Mandarin High School is accredited by the Southern Association of Colleges and Schools.

Enrollment



Demographics



SCHEDULE

Mandarin High School operates on an A/B Block with a skinny. This consists of 3 90-minute classes on A-day (1st through 3rd periods), 3 different 90-minute classes on B-day (4th through 6th periods), and a 45-minute "skinny" class (7th period) that meets everyday.



RANKING

Using the weighted Grade Point Average (GPA), students are ranked at the completion of their junior year, at the end of September of their senior year, and at the end of their senior year.

GRADUATION REQUIREMENTS

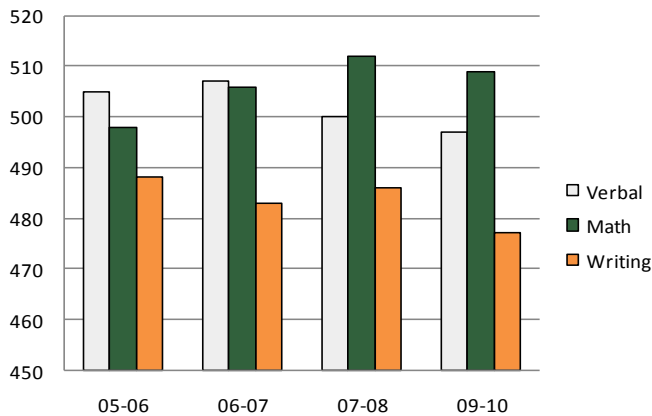
All graduates must demonstrate “minimum competency” in reading and mathematics as measured by the Florida Competency Assessment Test (FCAT). In addition, 24 credits are required with a cumulative grade point average (GPA) of 2.0. The 24 credits are comprised of:

- 4 English
- 4 Mathematics
- 4 Science
- 3 Social Studies
- 2 World Language
- 1 Performing/Fine/Voc Art
- 1 HOPE
- 5 Electives

POST SECONDARY PLANS

4-Year University or College	51%
Community College + 4-Year University or College	10%
Community College/ Technical School	29%
Military	7%
Undecided	3%

MHS Average SAT Scores



ADVANCED PLACEMENT EXAM RESULTS

	2006	2007	2008	2009
# of Students Taking Exams	418	1124	1306	1253
# of Exams Taken	838	1763	1994	1964
# of Exams Passed	475	566	493	572
% of Exams Passed	56.7	32.1	24.7	29.1

MAGNET PROGRAM

Mandarin High School is proud to sponsor the Advanced International Certificate of Education (AICE) program. AICE is a rigorous, internationally recognized pre-university curriculum that provides students with a broad, balanced preparation for college honors-degree programs. AICE is recognized as the equivalent to first-year standing at more than 150 colleges and universities in 39 states. AICE prepares students to enter college with up to 30 hours of college credit and provides skills required to be successful once they become college students.

AICE COURSE OFFERINGS

Thinking Skills	Chemistry
English Language and Composition	Physics
English Literature and Composition	United States History
Mathematics	Economics
Biology	International History

ADVANCED PLACEMENT COURSE OFFERINGS

English Language and Composition	Human Geography
English Literature and Composition	World History
Statistics	United States History
Calculus AB	Microeconomics
Calculus BC	Government
Biology	Psychology
Chemistry	European History
Physics	Spanish
Environmental Science	French
Computer Science	Latin

Average ACT Scores

