
Achievement Gap Data By Ethnicity & Gender

Duval County Public Schools
June 2007

Inspired by The Broad Center for the Management of School Systems

Beauclerc Elementary School #230

Presentation Guidelines

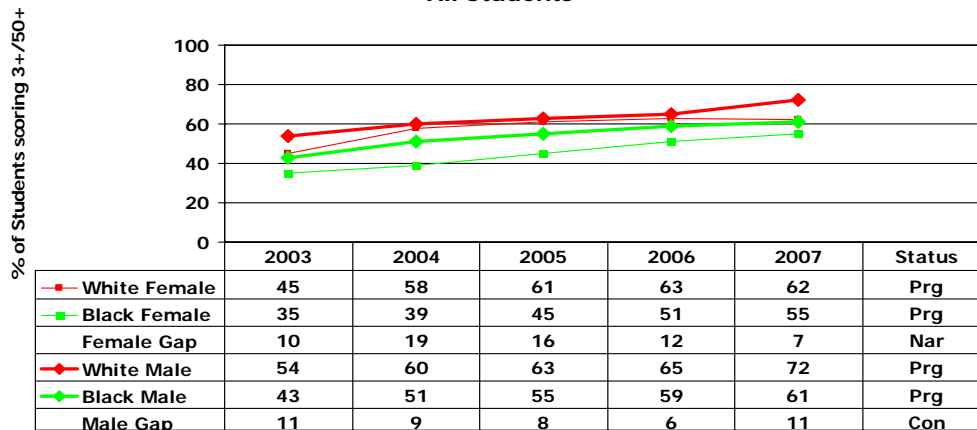
Definitions:

All Students – Every student who took the test, including ESE, LEP, and mobile students, regardless of whether or not their scores are counted in the school's grade. Beginning with 2000-01, this included all grade levels 3 – 10.

SSS – The Sunshine State Standards component of the FCAT in reading, mathematics, writing, and (beginning in 2006), Science.

NRT – The Norm-Referenced component of the FCAT in reading and mathematics.

FCAT Reading Proficiency SSS
All Students



The performance of White students appears as **RED** lines.

The performance of Black students appears as **GREEN** lines.

The performance of Female students appears as finer lines with **square** indicators.

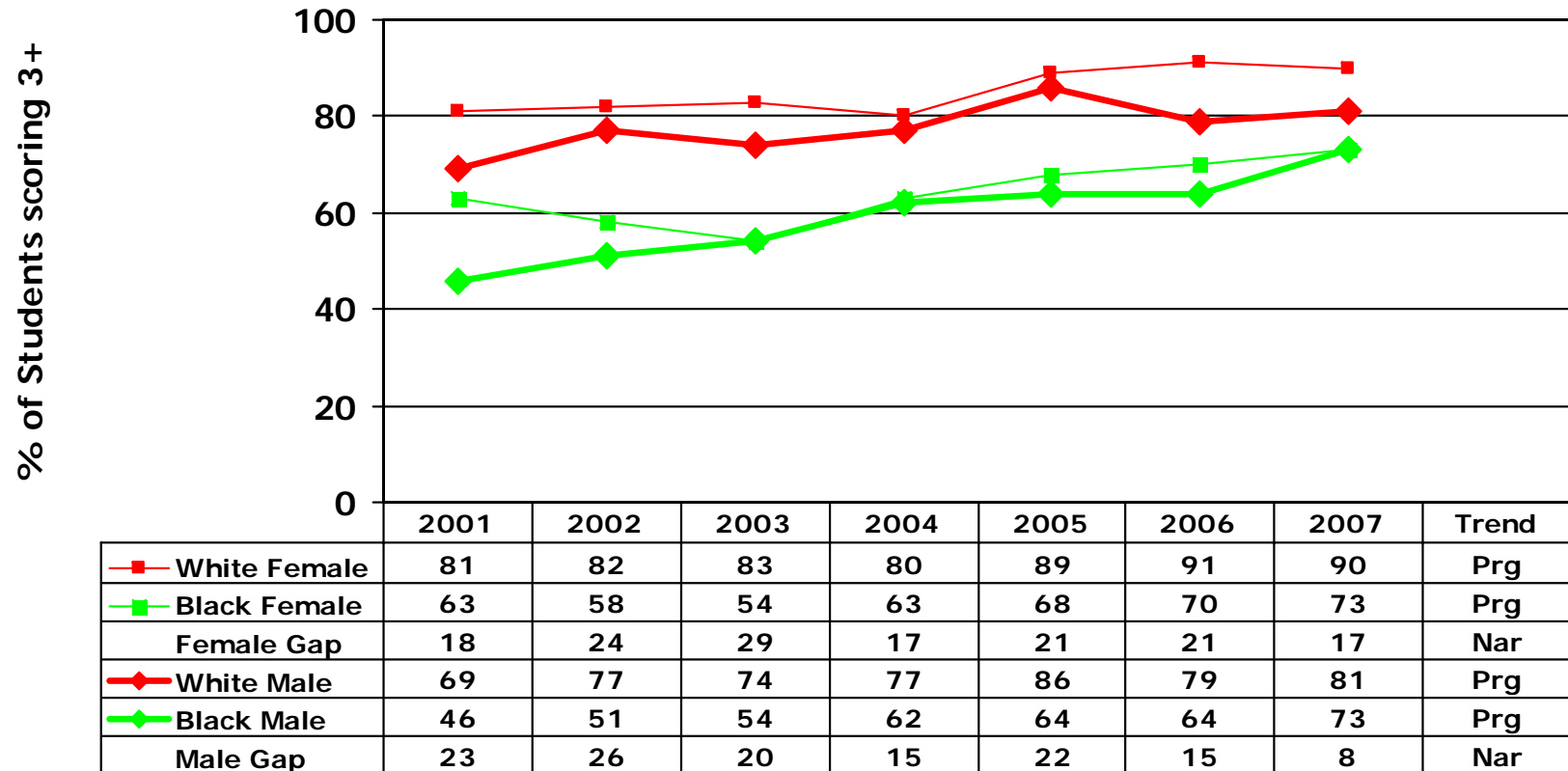
The performance of Male students appears as heavier lines with **diamond** indicators.

Note: Results are not displayed if there are fewer than 6 students in a single grade level category or 10 students in a multiple grade level category.

Performance Trend		Gap Trend	
Prg	Progressing	Nar	Narrowing
Reg	Regressing	Wid	Widening
Con	Constant	Con	Constant
N/A	No Trend	Clo	Closed
		N/A	No Trend

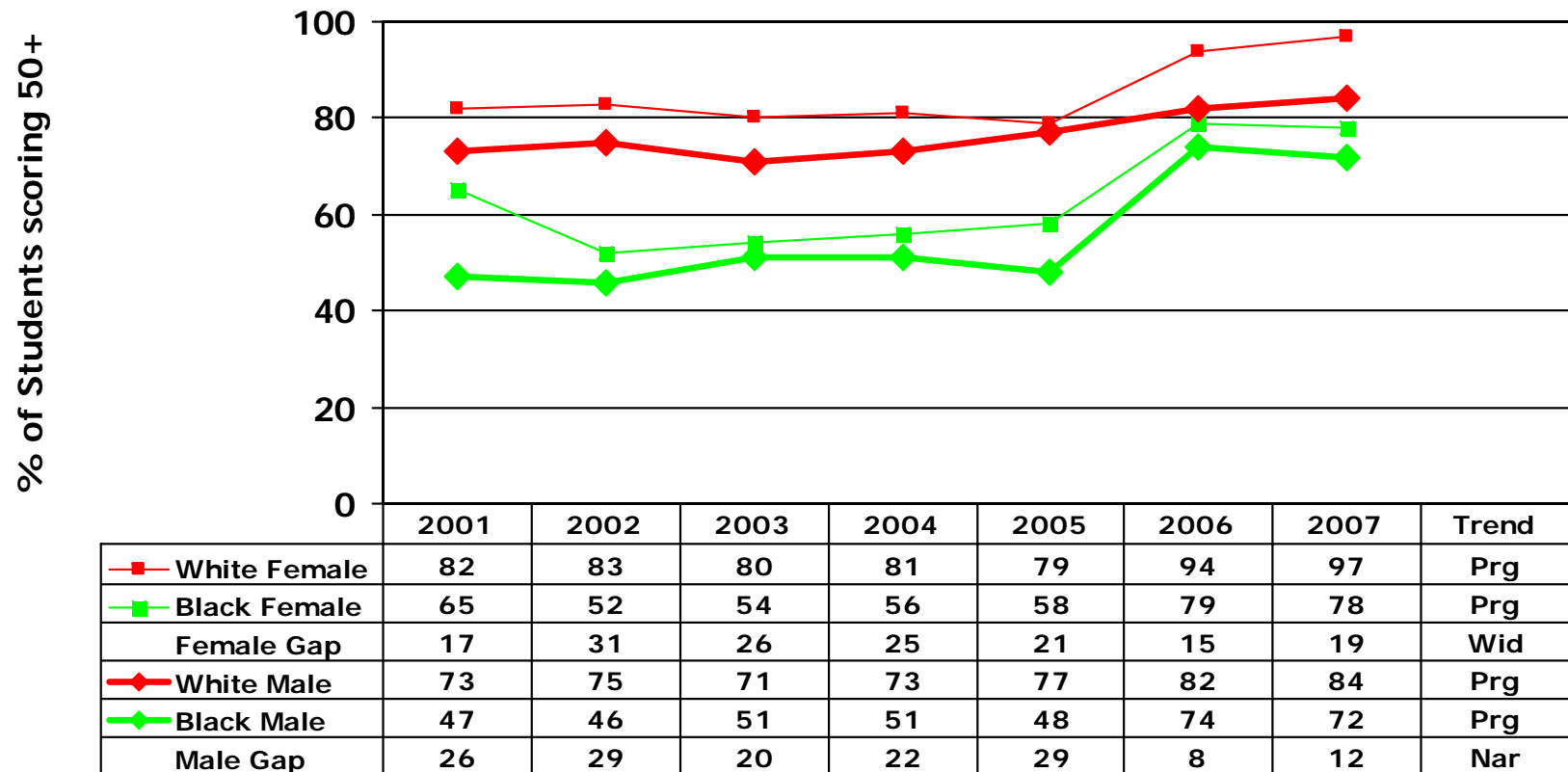
FCAT Scores by Gender & Ethnicity

FCAT Reading Proficiency SSS
All Students



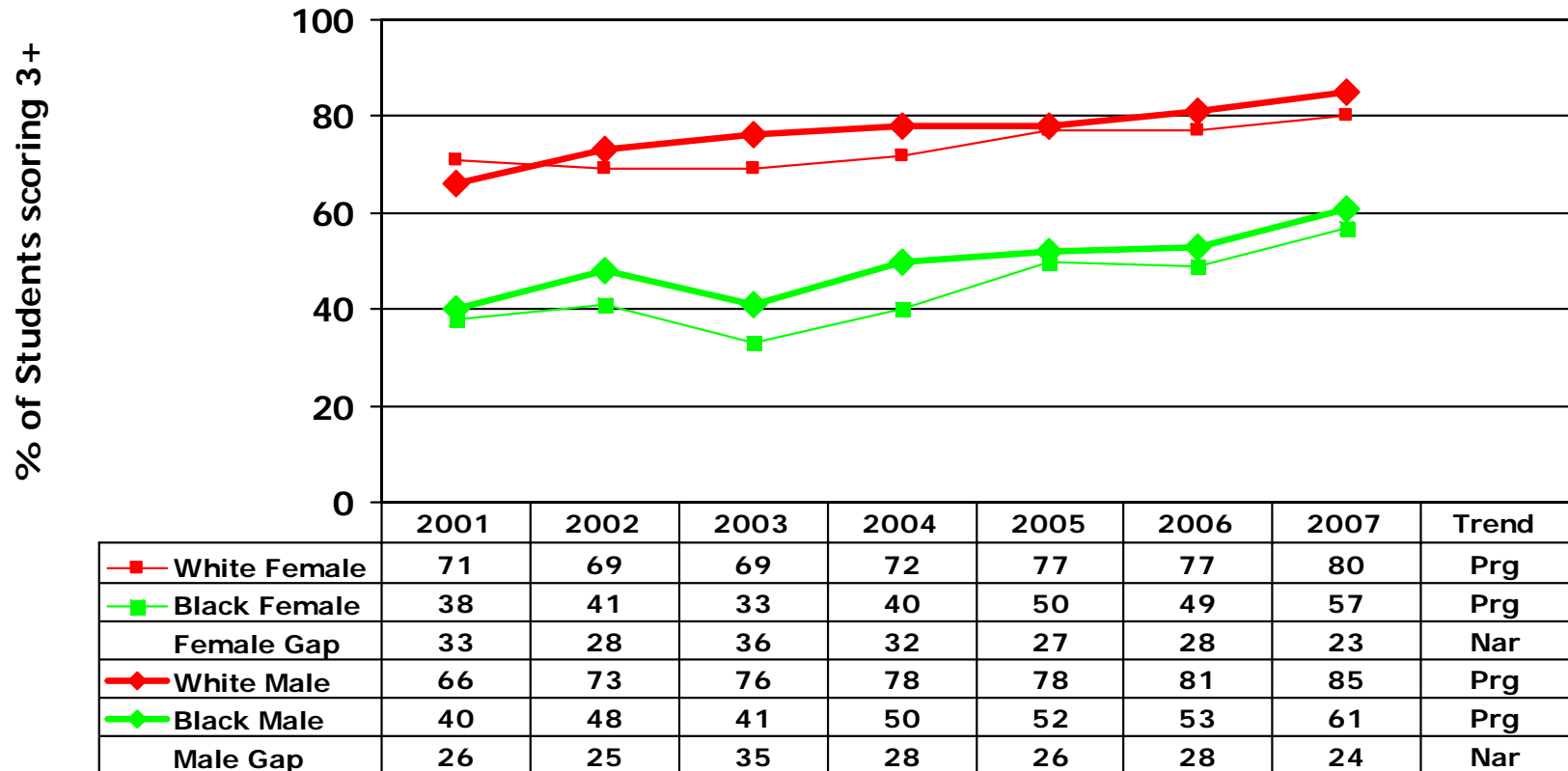
FCAT Scores by Gender & Ethnicity

FCAT Reading Proficiency NRT
All Students



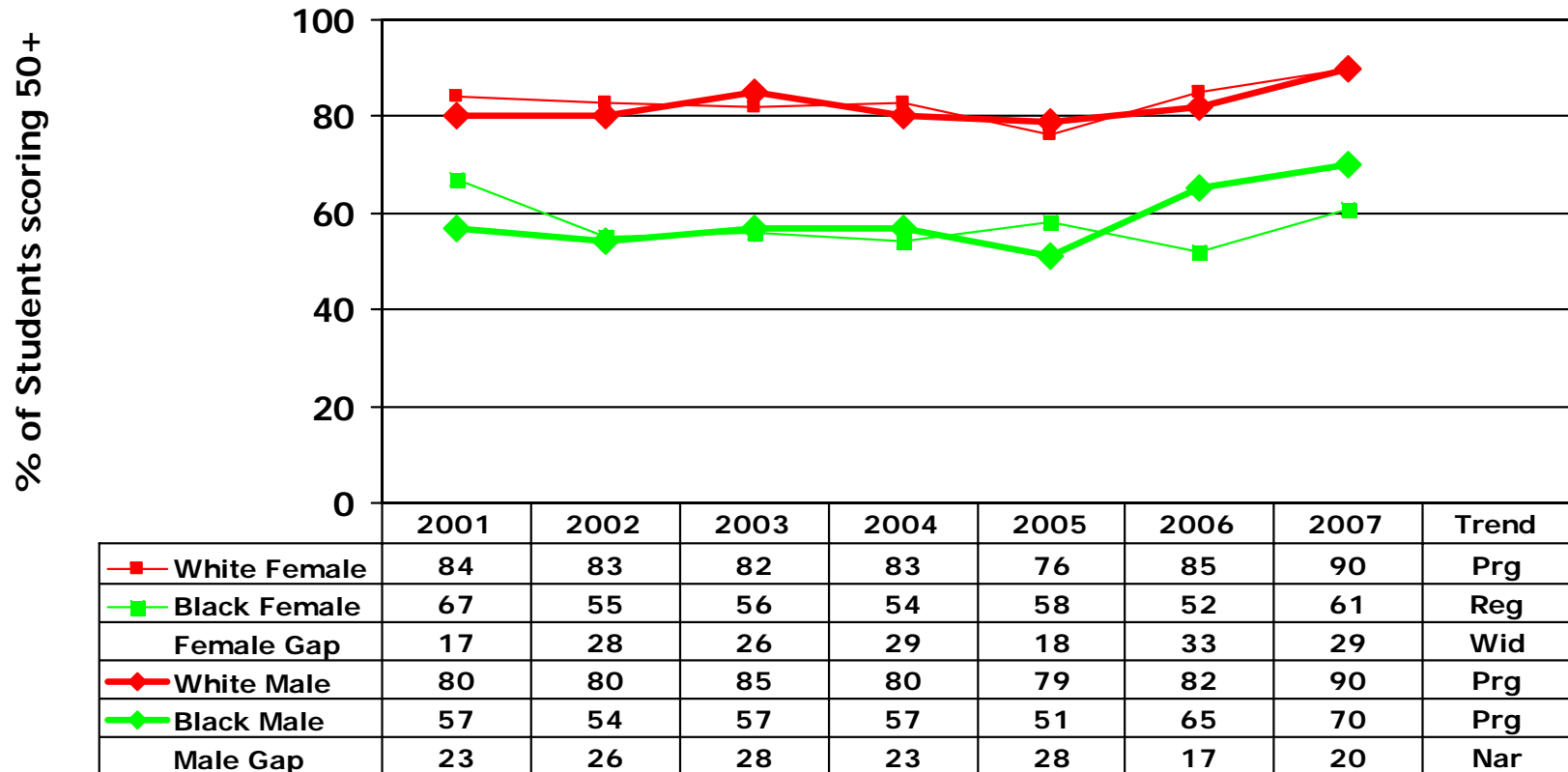
FCAT Scores by Gender & Ethnicity

FCAT Mathematics Proficiency SSS
All Students



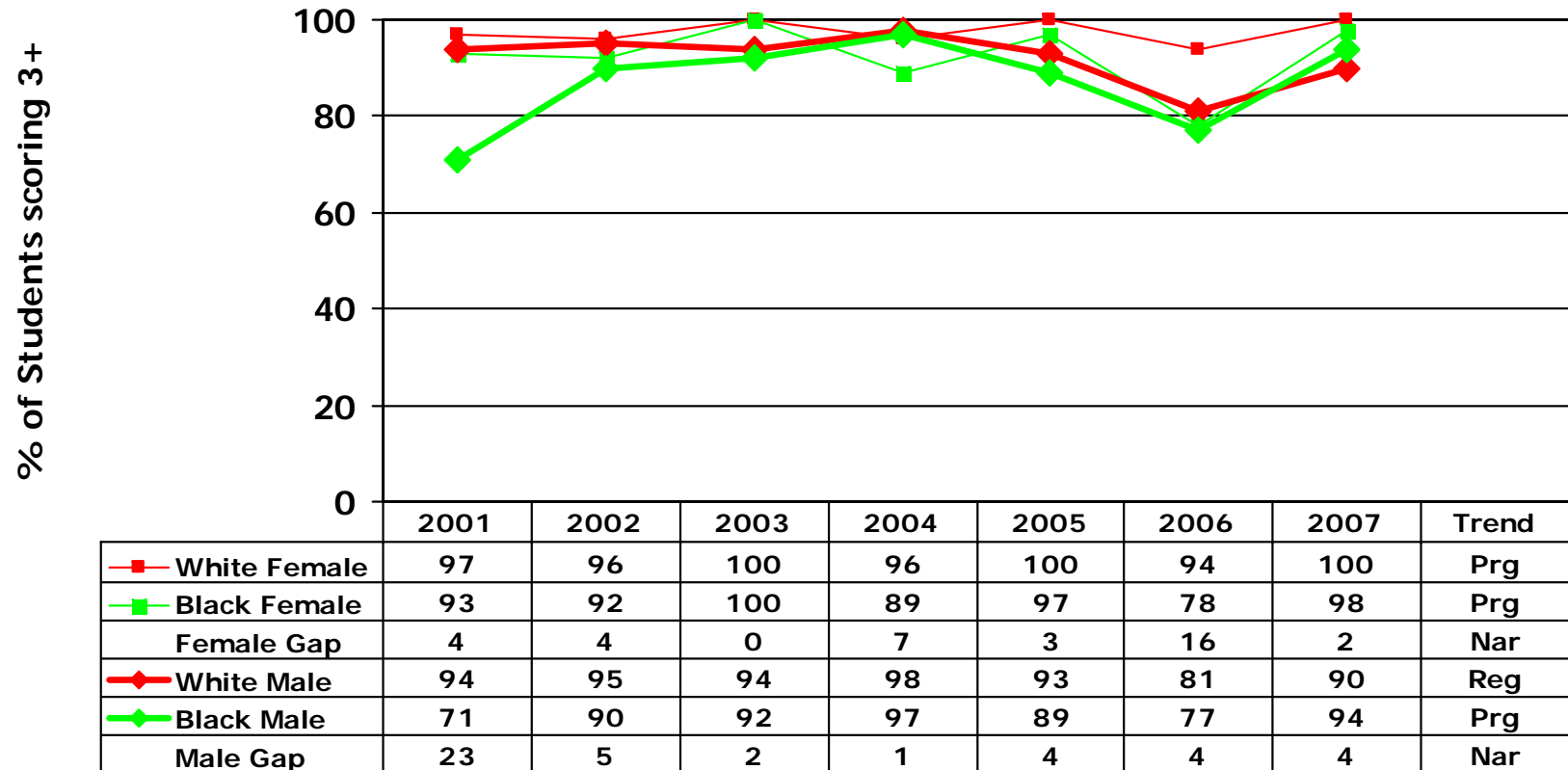
FCAT Scores by Gender & Ethnicity

FCAT Mathematics Proficiency NRT
All Students



FCAT Scores by Gender & Ethnicity

FCAT Writing Proficiency SSS
All Students



FCAT Scores by Gender & Ethnicity

FCAT Science Proficiency SSS
All Students

