



Neatnik2009.wordpress.com

ART NEWS
JACK E. MATTHEWS—EDITOR
SPECIALIST—VISUAL ARTS K-12

December 2011

Volume 13, Issue 5

ART NEWS

2012...And So It Begins—

Inside this issue:

January Mini Conference	2
Assistance Needed for Matting	2
Hopes and Dreams Exhibit	2

2011-12 CALENDAR
With updates **IN RED**
(Electronic Edition)

Dates to Remember

January 2—School Resumes

January 11—Early Dismissal

January 16—Martin L. King Day/no school

January 17—"Hopes and Dreams" Award Reception
Cummer Museum 6:00 pm

January 20—Mini Conference/ Cummer Museum 8:00-4:00

January 21—Matting Day for NEFSAA selected pieces
Art Lab 9:00—4:00

January 28—Early Dismissal

I hope each of you had a restful break. I say that because now, the wheels are in motion and at the ticking of the clock, we are on "full speed ahead".

There is always one time during the year folks will hear me say "this is my get out of my way before I kill you time". Well, here it is! The many preparations for our annual exhibitions now begins. Not only that, we have embarked on a new journey as we have become the hub for Scholastics as the North East Florida Scholastics Art Awards (NEFSAA) affiliate. The body of work submitted will be juried very soon. It is hoped that many of our Middle and High School students will participate.

Additionally, Senior High art teachers have the most time constraints as work from their students will be due for the annual **Senior High Exhibition**

in Early February. Remember, you can submit student work created since late February of last year as long as the student is still enrolled in your school. This was one way to compensate for the early due dates which, most often, kept your advanced students from entering the shows. As in the past, this will be a juried exhibition. Jurors have not yet been selected.

For the **Middle School Exhibition, Joi Hosker** will once again select the body of work for installation as well as select Juror's Choice Award recipients. Dates for submitting art work are March 12—13.

Although you can pull log sheet forms and release forms from the Curriculum Guide located on the DCPS Website, I will again forward you all documents. I realize we have some new teachers to the secondary level who may not

be familiar with our process. I will be most happy to work with these teachers. Just give me a holler.

Elementary art teachers, your day will come! Be looking for more information next month.

Duval County has been touted as having some of the highest talent in the state. It is made quite obvious by the quality of art we showcase year after year. This could not be made possible without a combination of extraordinary talent and great teaching skills. Let's continue the legacy. Be sure to make your submissions for the appropriate exhibitions as the dates come around.

Jack E. Matthews

District Specialist/

Visual Art—K-12

North East Florida Scholastics Art Awards

This has been a huge undertaking which now lets those of us who are managing this know why we have not endeavored to do this in the past! It is exciting AND a lot of work. Much thanks and appreciation go to retired art teacher **Gerie Leigh**

for spearheading the project, finding the financial support through through B.E.A.K.S., submitting all affiliate paperwork, and keeping the lines of communication open between all of us and our museum host, the **Museum of**

Contemporary Art—Jacksonville. The jurying process will take place the second week in January while the awards reception is slated for the end of the month. More information will be provided in the days ahead.

JANUARY MINI CONFERENCE—



The annual “Mini-Conference” will be held on Planning Day, Friday January 20 at the Cummer Museum. This is a time when teachers who attended the state conference, come back and share with Duval Art Teachers those experiences they found most helpful. Workshops will vary from informative sessions

to hands on workshops. *There will not be a general session* so that more opportunities to attend sessions will be possible. Workshops will be listed on the Schultz Site beginning the week of January 16th. Tentative list of presenters include **Tony Sznakowski, Megan Welch, Palma Gilder, Pam Patterson, Kathleen**

Schmidt, Alyce Walcavich, and Judith Evans.

Tentative workshops include: “Turning Your iPad into an ArtPad”, Clay Masks, Curriculum Planning for an Entire Year, Color Theory, Dressy Silhouettes, and Creative Journaling. In-depth information is forthcoming.

ASSISTANCE NEEDED FOR MATTING—



Actual pieces selected for the NEFSAA Exhibit may or may not come in matted. Additionally, if it does come in matted, the work may not have the correct dimensions. Because of these factors, there will be a matting day at the Art Lab on Saturday, January 21 beginning at 9:00. All pieces (we believe between 30—50) will need to be matted in the same mat board with the same outside dimensions. If you are interested in assisting, please call the Art Office at 390-2677. Professional Development Points will be offered.

HOPES AND DREAMS EXHIBIT—

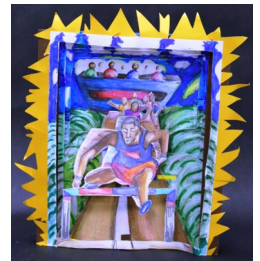


Selected work from the Hopes and Dreams Exhibition are on display in the Round Room at the Cummer Museum of Art and Gardens. Included in the exhibit are 15 pieces of work created by children in Ghana. An Awards Reception will take

place on Tuesday, January 17 in the Art Connections’ Round Room beginning at 6:00 pm. All awards are being provided by Hope Africa Inc. In total, 12 awards will be presented to students with an additional 3 awards to be presented to the

teachers of those students receiving First Place honors.

Work will remain on display through the first week in February



Top Left: Eris Ice—LaVilla School of the Arts

Bottom Left: Mirima Bacevak—Mandarin High School

Center Left: Clancie Camacho—Terry Parker High School

Center Right: Melissa Buck—Sandalwood High School

Top Right: Karry Eugene—LaVilla School of the Arts

Bottom Right: Keyanna Reed—Martin Luther King Elementary

AUGUST						
S	M	T	W	R	F	S
		1	2	3	4	5
6	7	8	9	10	11	12
13	14	15	16	17	18	19
20	21	22	23	24	25	26
27	28	29	30	31		

SEPTEMBER						
S	M	T	W	R	F	S
					1	2
3	4	5	6	7	8	9
10	11	12	13	14	15	16
17	18	19	20	21	22	23
24	25	26	27	28	29	30

OCTOBER						
S	M	T	W	R	F	S
						1
2	3	4	5	6	7	8
9	10	11	12	13	14	15
16	17	18	19	20	21	22
23	24	25	26	27	28	29
30	31					

NOVEMBER						
S	M	T	W	R	F	S
		1	2	3	4	5
6	7	8	9	10	11	12
13	14	15	16	17	18	19
20	21	22	23	24	25	26
27	28	29	30			

DECEMBER						
S	M	T	W	R	F	S
					1	2
3	4	5	6	7	8	9
10	11	12	13	14	15	16
17	18	19	20	21	22	23
24	25	26	27	28	29	30
31						

JANUARY						
S	M	T	W	R	F	S
1	2	3	4	5	6	7
8	9	10	11	12	13	14
15	16	17	18	19	20	21
22	23	24	25	26	27	28
29	30	31				

15 - 19 Pre-Planning

17 - Subject Area Meeting/Cummer Museum 8:00-3:00 (6 pts)

22 - First day for students

5 - Labor Day-schools/admin office closed

7 - Early Dismissal

10 - Clay Workshop Art Lab 9:00-4:00 (6 pts)

21 - Early Dismissal/"Empty Bowls" Pt I Lab 2:30 - 5:30 (3 pts)

5 - Early Dismissal/"Empty Bowls" Pt II Lab 2:30 - 5:30 (3 pts)

8 - Creativity Workshop Art Lab 9:00-4:00 (6 pts)

19 - Early Dismissal/Quilt Projects Due at Art Lab 2:00 - 5:00

28 - Planning Day Cummer Museum 8:00-3:00 (6 pts)

"Hopes and Dreams" Project due

31 - DATA fall show entries due Art Office 4-6

2 - Early Dismissal

3-6 - FAEA Conference St. Petersburg, Florida **9—Art Lab Open 2:00-5:30**

11 - Veteran's Day - Schools/Admin Offices closed

12 - MidTown Centre "Salute to the Troops" DATA fun booths

16 - Early Dismissal **22— Vessels due for Jax Cystic Fibrosis**

23 - Weather Day

24-25 Thanksgiving Holidays

28 - Weather Day

7 - Early Dismissal **ArtWalk/DATA Auction at Hemming Plaza Jewelers**

19-21 - Weather Days

22 - Winter Break Begins

23,26-Schools/Admin Offices Closed

1 - New Year's Day

2 - School Resumes

11 - Early Dismissal

16 - Martin Luther King Day Schools/Admin Offices Closed

17 - Hopes and Dreams Reception/Cummer Museum/6:00 pm

20 - Planning Day Mini Conference location Cummer Museum

21 - Mat Art Work for NEFSAA/Art Lab/9:00-4:00

25 - Early Dismissal

28 - NEFSAA Award Reception/MOCA-Jax/time: TBA

FEBRUARY							
S	M	T	W	R	F	S	
				1	2	3	4
5	6	7	8	9	10	11	
12	13	14	15	16	17	18	
19	20	21	22	23	24	25	
26	27	28	29				

MARCH							
S	M	T	W	R	F	S	
				1	2	3	
4	5	6	7	8	9	10	
11	12	13	14	15	16	17	
18	19	20	21	22	23	24	
25	26	27	28	29	30	31	

APRIL						
S	M	T	W	R	F	S
1	2	3	4	5	6	7
8	9	10	11	12	13	14
15	16	17	18	19	20	21
22	23	24	25	26	27	28
29	30					

MAY						
S	M	T	W	R	F	S
		1	2	3	4	5
6	7	8	9	10	11	12
13	14	15	16	17	18	19
20	21	22	23	24	25	26
27	28	29	30	31		

JUNE							
S	M	T	W	R	F	S	
						1	2
3	4	5	6	7	8	9	
10	11	12	13	14	15	16	
17	18	19	20	21	22	23	
24	25	26	27	28	29	30	

8, 9 - Senior High/DATA work due to Art Lab 8:00-5:00
 8 - Early Dismissal
 20 - Presidents' Day - Schools Closed
 22 - Early Dismissal
 25 - Senior Frame Day Art Lab 9-4 (6 pts)

1 - Senior Show work transported to FSCJ/South Campus
 7 - Early Dismissal
 8 - Senior/DATA Shows reception Wilson Gallery 5:00-8:00
 12, 13 - Middle School work due to Art Lab 3:00-6:00
 19-23 - Spring Break
 28 - Early Dismissal Day/Matting Mania Art Lab 2:00-6:00
 29 - Senior/DATA Shows close

2 - School Resumes
5 - Planning Day—Elementary Library Installations
 6 - Schools/Admin Offices Closed
 12 - Middle School Show reception FSCJ/Kent Campus 6:00-8:00
 13 - Leslie Beddard Scholarship Applications due
 11 - Early Dismissal
 25 - Early Dismissal
 26 - Middle School Show ends

3 - "Best of Elementary" reception FSCJ/Kent Campus 6:00-8:00
 11 - DATA Principal of the Year packets due
 17 - "Best of Elementary" Show closes
 23,24 - All student artwork to be picked up Art Lab 3:00-6:00
 28 - Memorial Day - Schools/Admin Offices closed

7 - Last Day For Students
 8 - Schools Closed
 11,12 - Post Planning Days
 13 - DATA End of Year Luncheon location TBA

Weather days will be considered holidays unless needed

Additional Workshops TBA