

## 2008-09 Budget Priorities

- Comply with sixth year requirement of the Class Size Amendment IX initiative.
- Teacher Recruitment and Retention. (Step increases and salary schedule enhancements for teachers)
- Continue to provide Non-Contributory Health Insurance for Individual Employees.
- Continue to enhance Art, Music, and Physical Education Programs at elementary schools.
- Continued support for priority schools.
- Certificates of Participation (COPS) issuance for a new elementary school in the Bartram Springs area.
- Middle school credit recovery.
- Expand Summer Reading Program.
- Freshman experience.
- Expansion for High School redesign/A/B block hybrid.
- Redesign conduct alternative schools.
- Expand Advancement via Individual Determination (AVID).
- Preliminary Scholastics Aptitude Test (PSAT) (9th & 11th grades).
- Formative Assessment Tools - Northwest Evaluation Association (NWEA).
- Individuals with Disability Education Act (IDEA) inclusion Model.



Learn more: [www.duvalschools.org](http://www.duvalschools.org)



Teaching.



Learning.



Achieving.



## Duval County School Board



**Stan Jordan**  
District 1  
390-2371  
[jordans@duvalschools.org](mailto:jordans@duvalschools.org)

**Betty Burney**  
District 5  
390-2375  
[burneyb@duvalschools.org](mailto:burneyb@duvalschools.org)



**Nancy Broner**  
District 2  
390-2386  
[bronern@duvalschools.org](mailto:bronern@duvalschools.org)

**Vicki Drake**  
District 6  
390-2373  
[drakev@duvalschools.org](mailto:drakev@duvalschools.org)



**W. C. Gentry**  
District 3  
390-2239  
[gentryw@duvalschools.org](mailto:gentryw@duvalschools.org)

**Tommy Hazouri**  
Chair  
District 7  
390-2372  
[hazourit@duvalschools.org](mailto:hazourit@duvalschools.org)



**Brenda A. Priestly Jackson**  
Vice chair  
District 4  
390-2374  
[priestlyjb@duvalschools.org](mailto:priestlyjb@duvalschools.org)

## Duval County Public Schools

Superintendent of Schools  
**Ed Pratt-Dannals**

Deputy Superintendent  
**Pat Willis**

Chief Operating Officer  
**Doug Ayars**

Chief of Staff and Partnerships  
**Alvin G. White**

- ▶ Information about the DCPS budget is available by contacting the district's Budget Services Office at (904) 390-2097 from 7:30 a.m. to 4:30 p.m. weekdays.

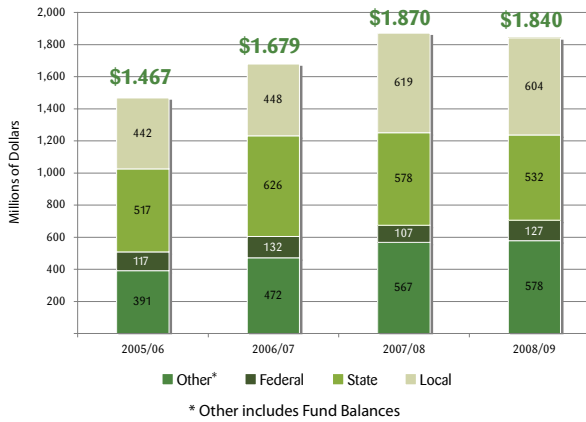


# A citizen guide to Duval County Public Schools

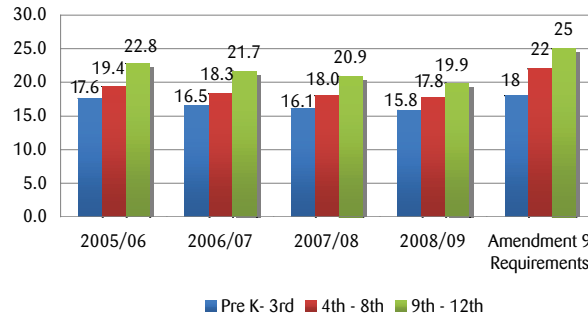
2008-09



### Income • All Sources



### Average Class Size



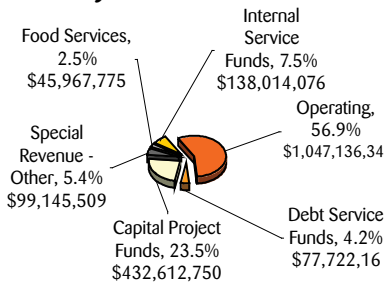
### Our Vision

Every student will graduate from Duval County Public Schools with the knowledge and skills to be successful in post-secondary education and/or the workforce.

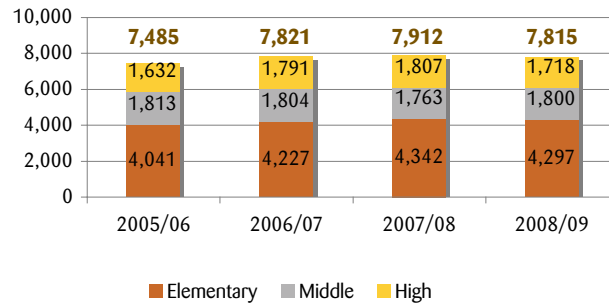
### Our Mission

The Duval County Public School System is committed to providing high quality educational opportunities that will inspire all students to acquire and use the knowledge and skills needed to succeed in a global economy, and culturally diverse world.

### 2008-09 Budget • All Sources Projected Revenue



### Classroom Teachers By School Level



### Our Goals

▶ **Increase academic achievement for all students**

Increase overall achievement for all students while moving significantly toward eliminating the achievement gap of racial and ethnic groups and students from low income families.

▶ **Significantly increase the graduation rate**

Increase the percentage of students graduating ready for post-secondary education and work.

▶ **Employ the best teachers and principals**

Hire, develop, support and retain the best teachers and principals in the nation for all schools.

▶ **Establish safe and respectful schools**

Establish safe schools where students and teachers are respected, valued and feel secure.

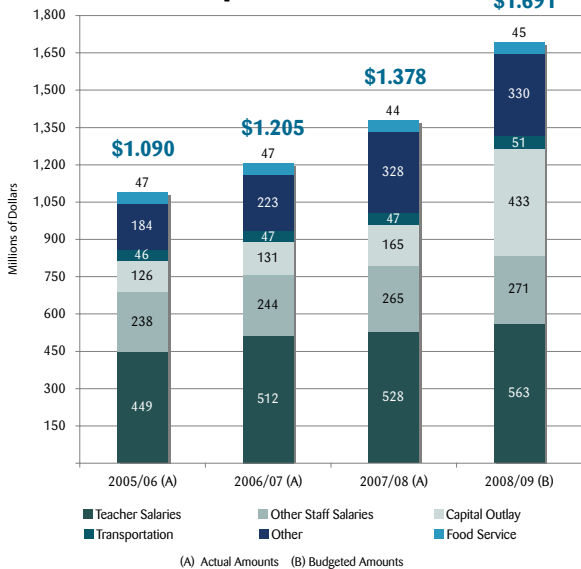
▶ **Engage family and community support**

Energize families, community, civic and business leaders and corporations to engage in the success of education.

▶ **Deliver high quality district support for schools**

Continually enhance school performance through delivery of high quality District management, operational support, and customer service.

### Total Expense • All Funds



### Number of Students by School Level

