

ACE Process for Reviewing Magnet Priority One

October 11, 2011

Agenda

1. Introduction (D.Ayars)
2. Context and background (S.Hague)
3. Data sets (T.O'Dea)
4. Process for workgroups (T.Richter)
5. Workgroup discussion (groups)

Magnet Milestones

Year	Event
1969	•Court ordered desegregation plan (forced busing)
1981	•Stanton becomes Duval County's first magnet school
1985	•Douglas Anderson School of the Arts opened as Duval County's second magnet school
1990	•Stipulation and Agreement with Jacksonville Branch, NAACP •Converted schools to uniform org structure of K-5, 6-8 & 9-12 •Converted from forced busing plan to voluntary desegregation plan •Laid the foundation for approximately 80 magnet and select programs that opened for the 1991-1992 school year
1997	•Board adopted Post-Unitary Status policies. The Post-Unitary policy on magnet schools and programs did not become effective until the District was declared unitary
1999	•Duval County School District declared unitary by U.S. District Court Middle District of Florida
2001	•Appeal filed
2001	•Unitary Status affirmed by U.S. Court of Appeals for the 11 th Circuit

Definition of Terms

- Neighborhood School
- Whole School Magnet
- School within a School Magnet
- Dedicated Magnet School
- Priority I

How Many Magnet Schools are there?

- Elementary dedicated - 3
- Elementary whole school - 32
- Middle dedicated - 5
- Middle whole school - 8
- K-8 whole school - 2
- HS dedicated - 6
- HS school within school - 6

Magnet Schools and Programs

Policy 5.46 – Goals

- A. To promote or maintain diversity
- B. To provide a unique or specialized curriculum or approach
- C. To improve achievement for all students participating in the magnet school or program
- D. To stabilize student assignment

What is Priority I?

- School Board Policy 5.46 Regarding Priority I
 - In the case of magnet schools without an assigned attendance area, the District may give a preference for available seats to students who reside in the previous attendance area for the school.
- Current procedure gives these students first access to available seats*.

*Note: Florida Statute 1003.45 provides that students who are the dependents of active duty military personnel receive placement into a program of their choice within a Duval County School including magnet schools, charter schools, acceleration programs and neighborhood schools.

Which schools are impacted by Priority I?

Dedicated Magnet Schools that once had an Assigned Attendance Area

- Jacksonville Beach
- J. Allen Axson
- Pine Forest
- James W. Johnson
- Kirby-Smith
- Julia Landon
- Darnell-Cookman
- Stanton College Preparatory
- Paxon SAS

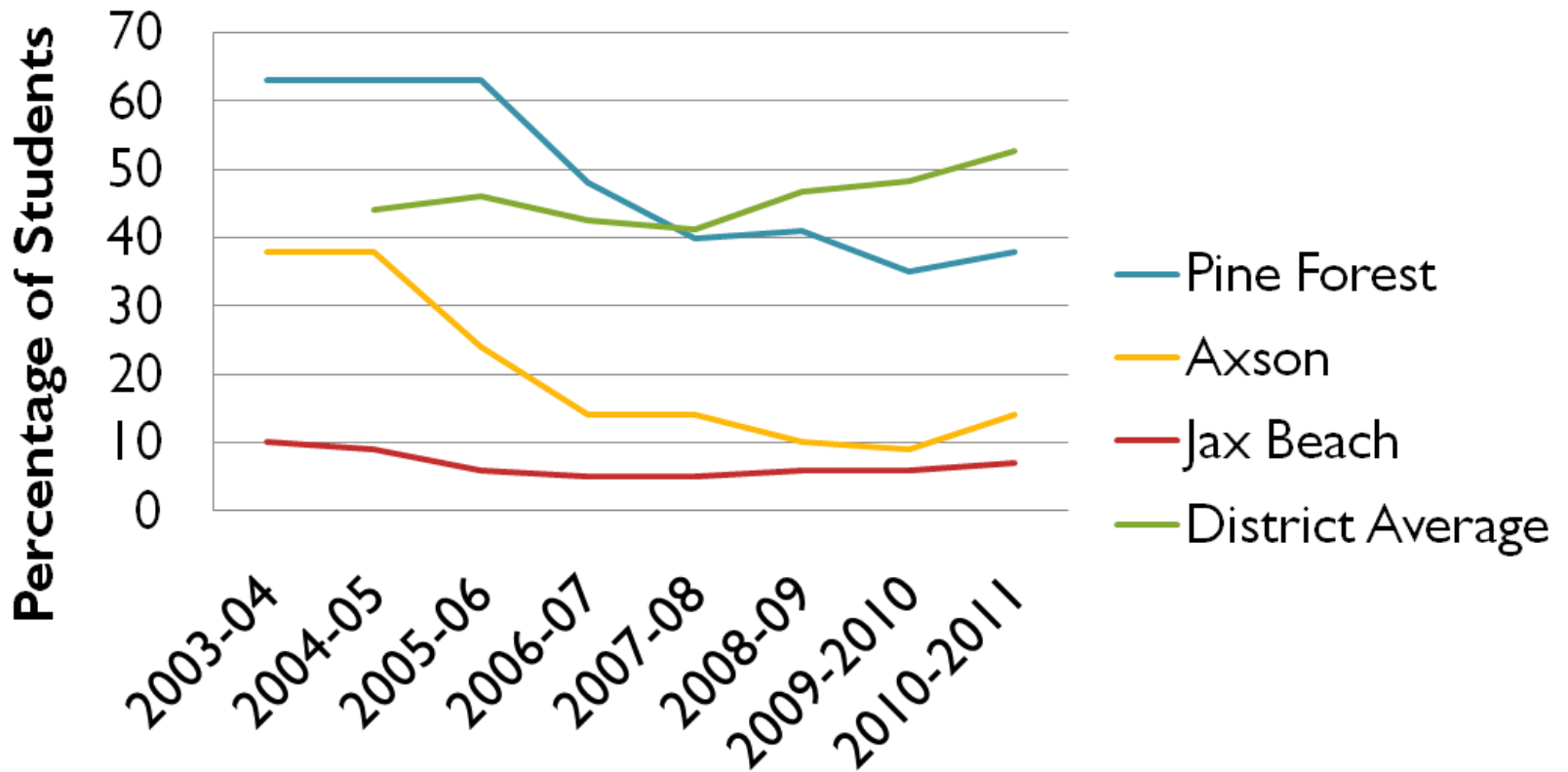
Dedicated Magnet Schools that never had an Assigned Attendance Area

- A. Philip Randolph
- Frank H. Peterson
- LaVilla School of the Arts

Douglas Anderson uses an audition process; therefore Priority I is not used for the placement of students.

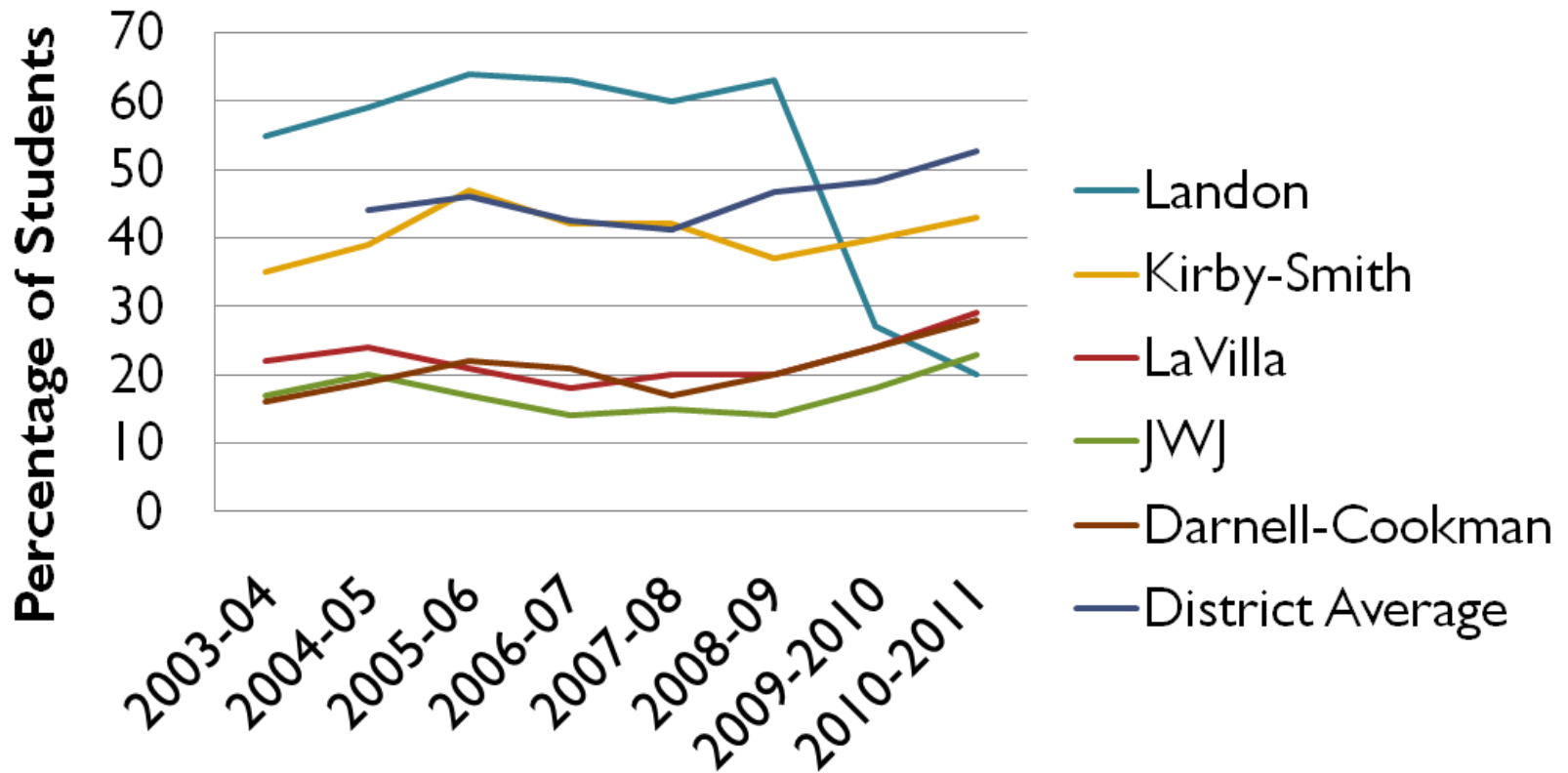
Historical Demographics for Dedicated Elementary School Magnets

F/R Lunch



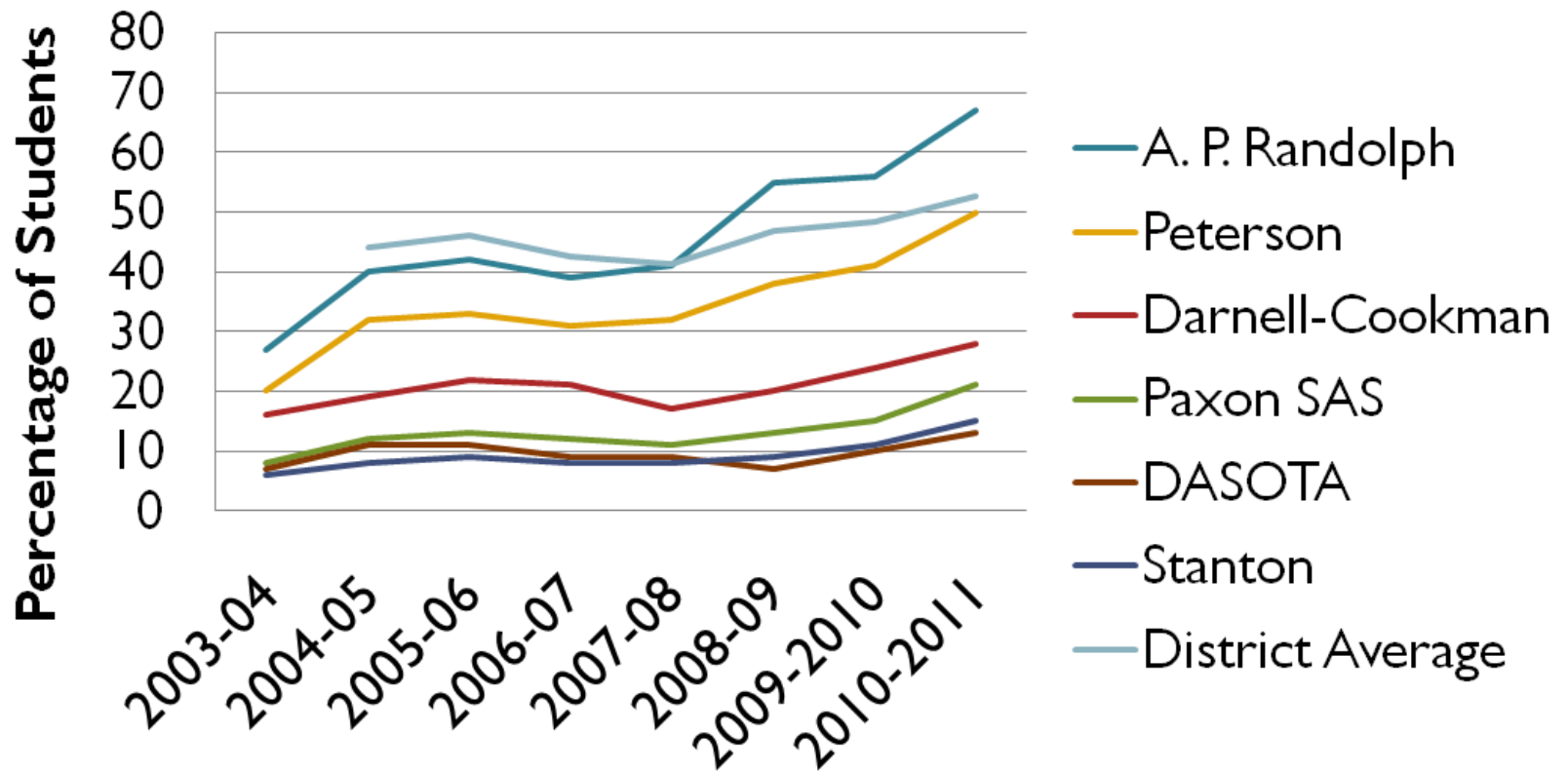
Historical Demographics for Dedicated Middle School Magnets

F/R Lunch



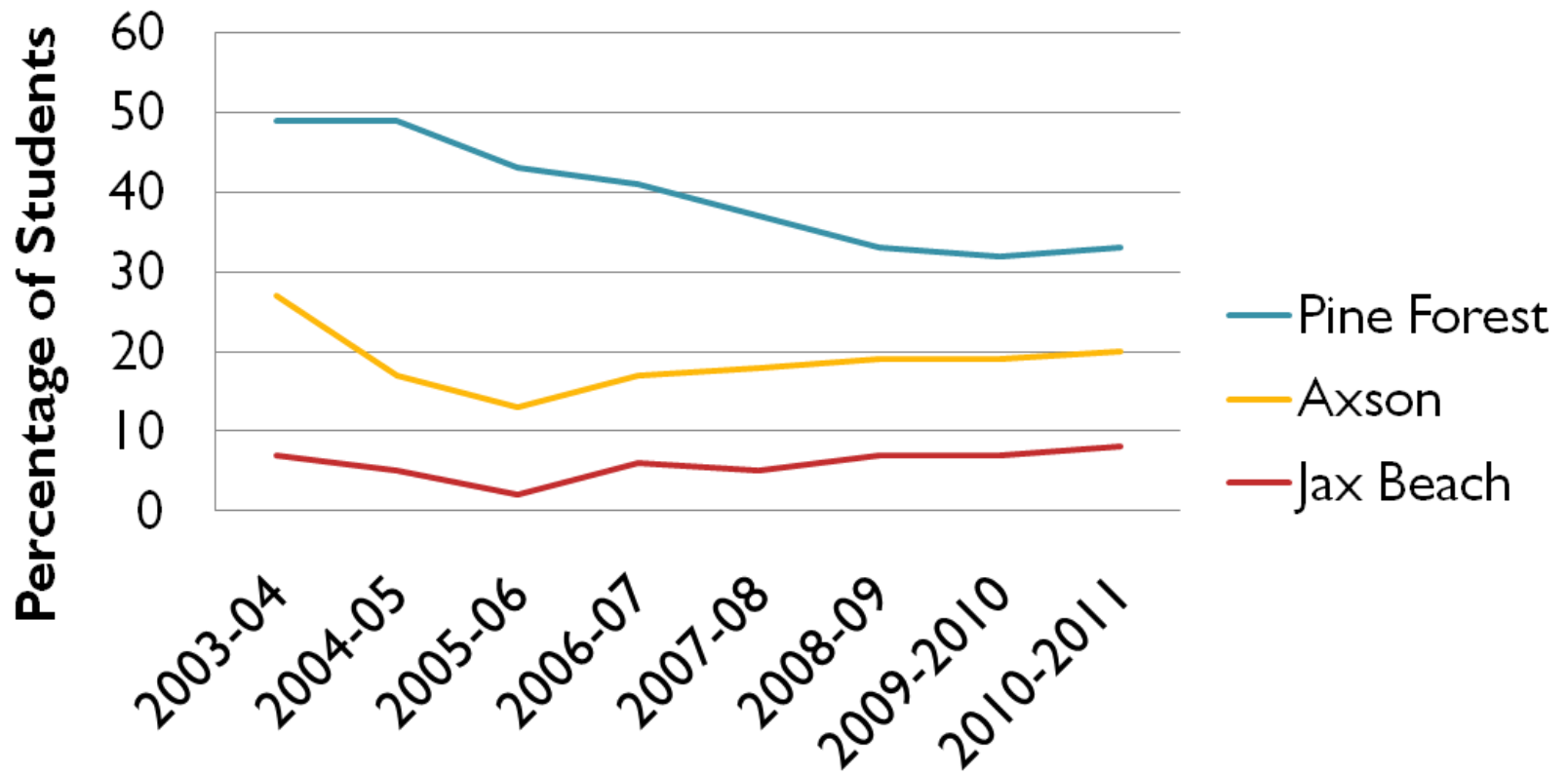
Historical Demographics for Dedicated High School Magnets

F/R Lunch



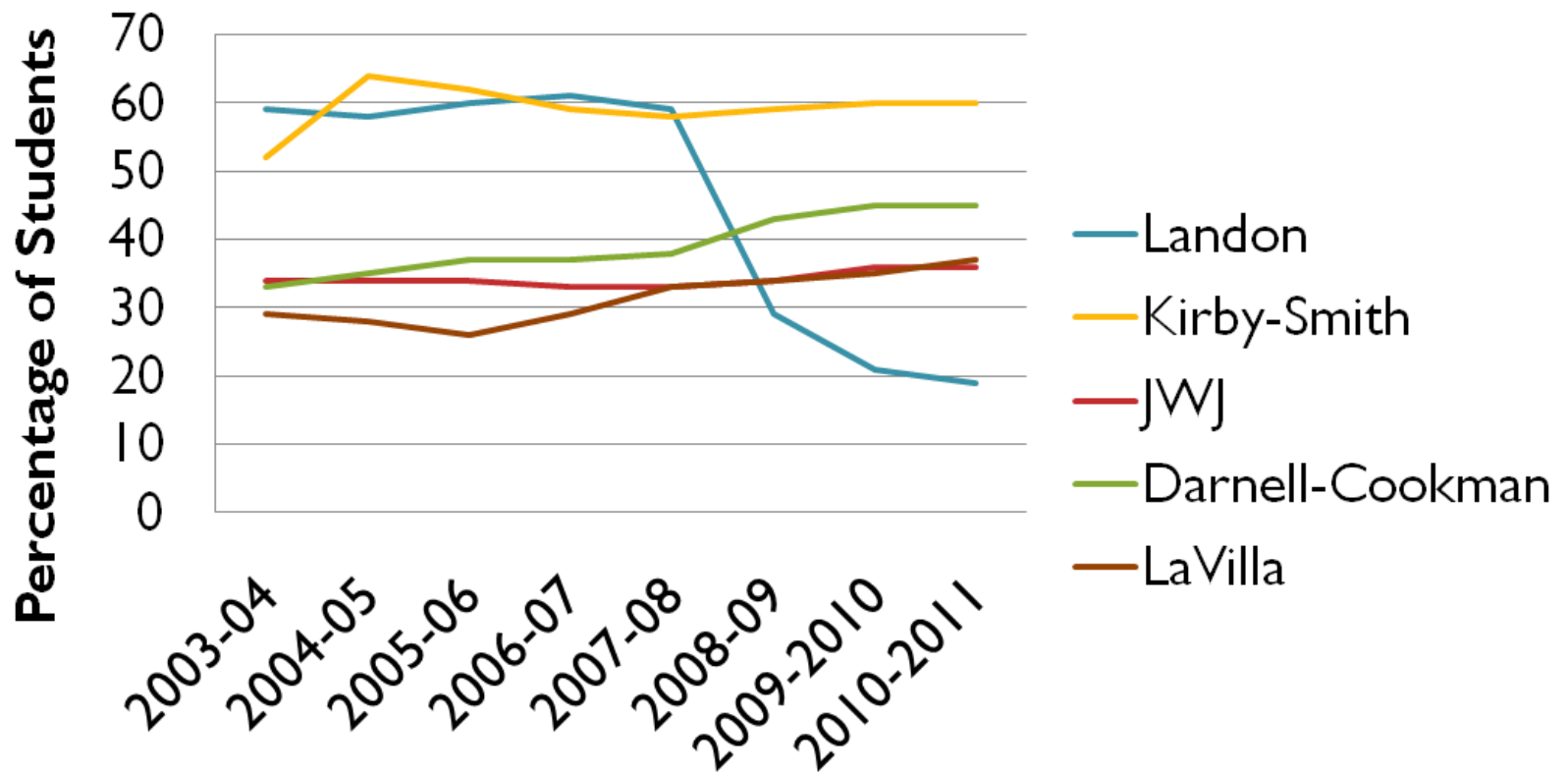
Historical Demographics for Dedicated Elementary School Magnets

Black vs. non-Black Enrollment



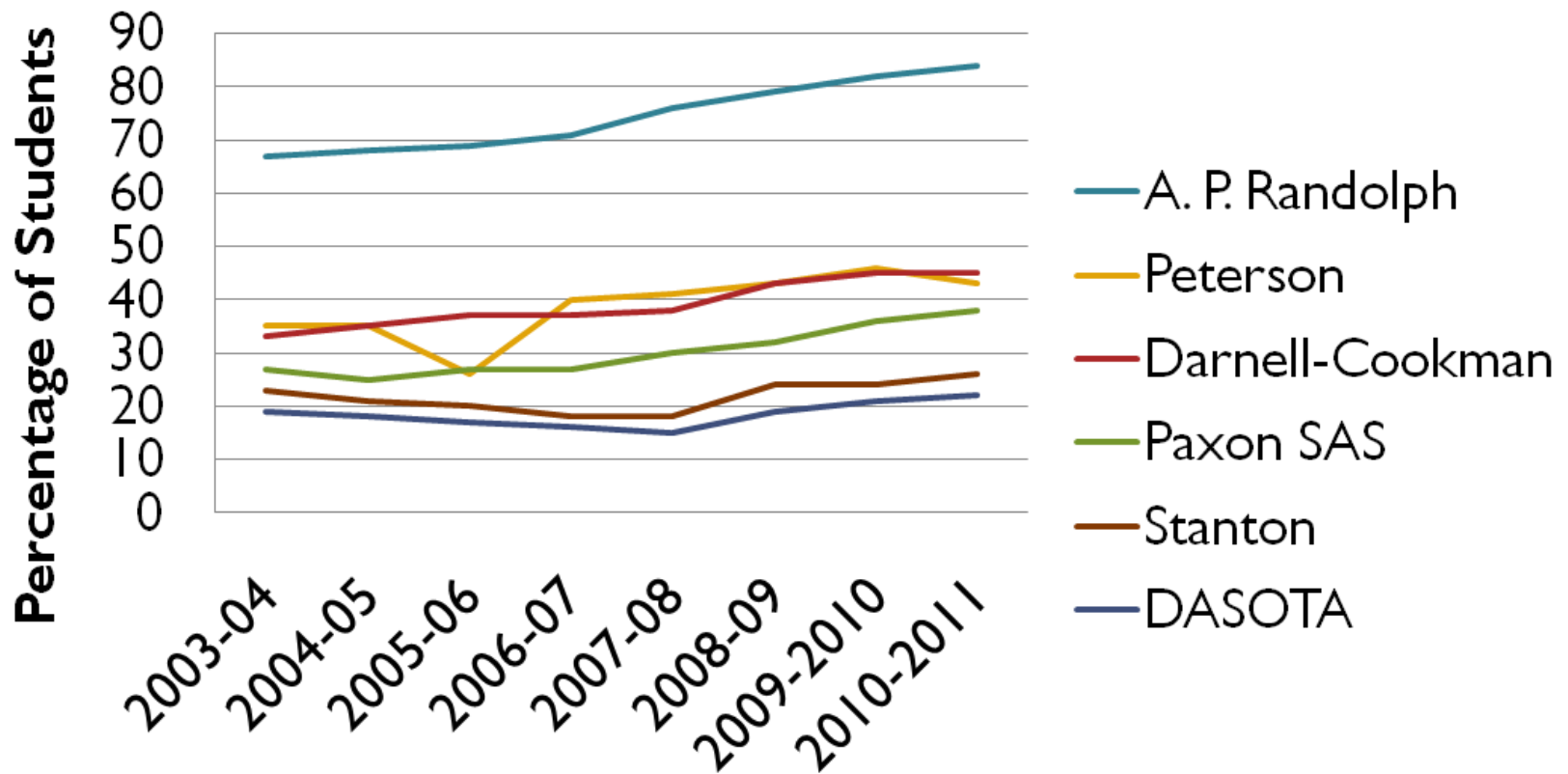
Historical Demographics for Dedicated Middle School Magnets

Black vs. non-Black Enrollment



Historical Demographics for Dedicated High School Magnets

Black vs. non-Black Enrollment



2011 Capacity vs. Eligible for Priority One Dedicated Magnets

	Capacity	Eligible	Ratio
Axson	570	90	16%
Darnell-Cookman	1404	219	16%
Jax Beach	591	181	31%
JWJ	1056	1282	121%
Kirby-Smith	816	754	92%
Landon	735	1027	140%
Paxon SAS*	1520	1516	100%
Pine Forest	491	227	46%
Stanton*	1637	805	49%

Of the magnet seats at Paxon and Stanton approx. 600 per school are allocated to the IB Programs. These are not Magnet seats. These seats are not available in the lottery.

2011-12 Lottery Results for Priority One at Dedicated Magnets (all grades)

	Capacity	Accepted	Ratio
Axson	570	0	0%
Darnell-Cookman	1404	13	1%
Jax Beach	591	10	2%
JWJ	1056	50	5%
Kirby-Smith	816	61	7%
Landon	735	285	39%
Paxon SAS	1520	83	5%
Pine Forest	491	16	3%
Stanton	1637	27	2%

Process for Working Groups

- Dates; ideally should attend all 3 mtgs.
 - Oct. 11th, Oct. 18th, Nov. 3rd
- Process; groups of 8-10 people from a range of backgrounds
- Workgroup discussions about information presented
- Outcomes – please record
- Next Steps

Task for Community Engagement

1. Determine if the current practice of offering Priority I to students residing in the former attendance area of dedicated magnet schools should be modified.
2. Determine if the complex set of lottery priorities currently in use can be simplified.

Thought Starters

- Use existing policy and procedures (no changes)
- Cap the quantity (or %) of seats available for Priority One preference for former attendance areas
- Change the position of the priority for former attendance areas relative to the other priorities
- Discontinue the process of using Priority One preference for former attendance areas
- Other ideas?

Output from Working Groups

- Was there consensus if something should change?
- Did any of the 'thought starter' ideas get support?
- Were other ideas offered that could be considered? Such as...

Information

- Project website will be online later this week with all information from this meeting.
- Tonight's presentation will be on the DCPS facilities page tomorrow.
- Please contact Richard Beaudoin with any questions.

<http://www.dejongrichter.com/projects/acepriorityone>

beaudoinr@duvalschools.org