

**Community Meeting**  
**Academic & Community**  
**Excellence Planning**

**Focus Area**

**Facility Assessment, Utilization and**  
**School Boundaries**  
**Issues & Concerns for**  
**North Area**

**Meeting Location**  
**Raines High School**

**March 2008**

**Teaching. Learning. Achieving**

## **WELCOME**

### *Opening Comment*

*Mr. Doug Ayars, Chief Operating Officer*

### *Agenda*

#### **I. A Look at the Present**

*Mr. Ron Fagan, Ex. Director, Operations*

*Enrollment History & Trends*

*Area Utilization*

*Facility Condition Index*

#### **II. A Look at the Future**

*Mr. Richard Beaudoin, School Planner*

*Population*

*Housing*

*Enrollment*

*Concurrency*

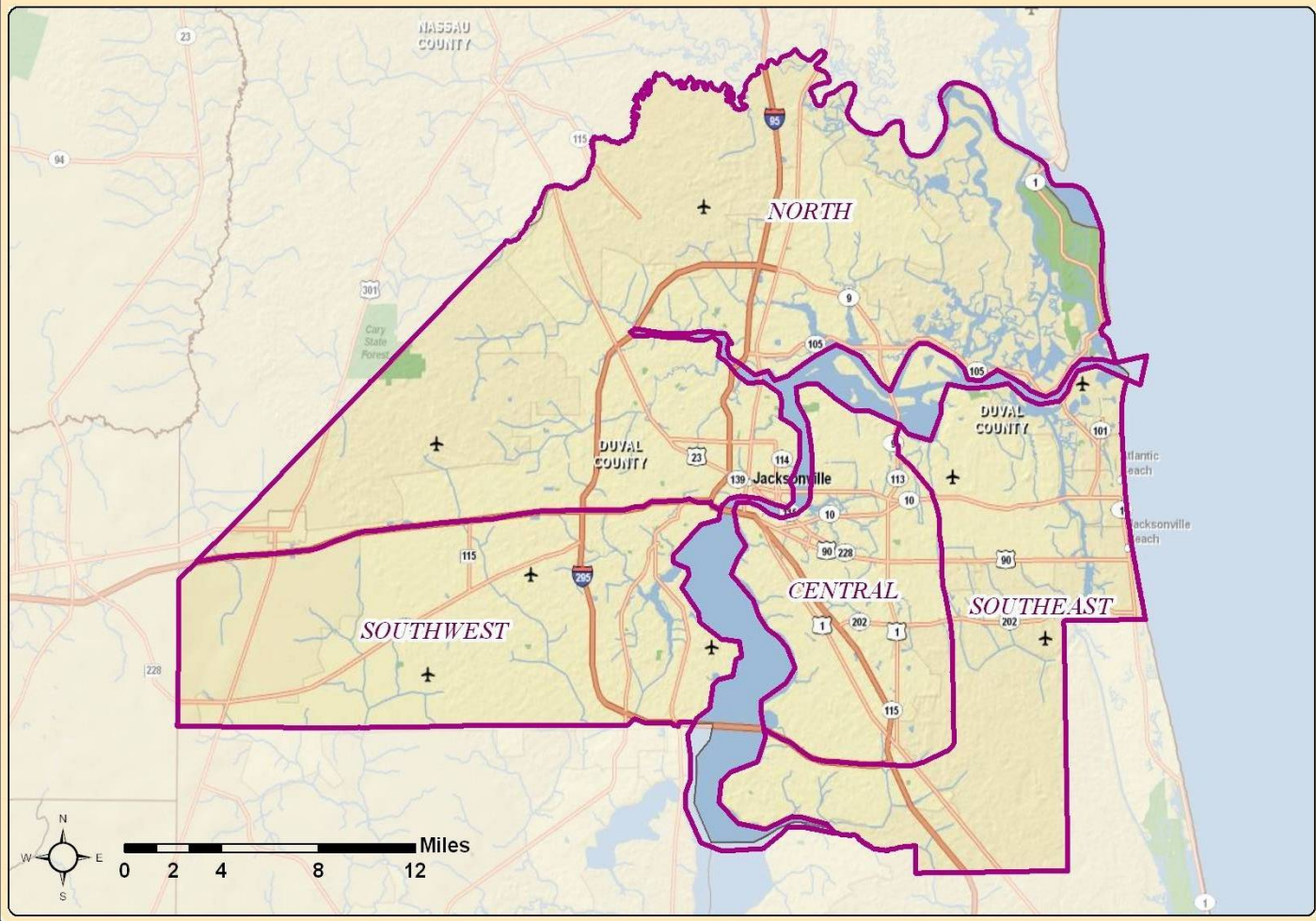
#### **III. Issues & Concerns, Mr. Ron Fagan**

#### **IV. Community Input / Comments**

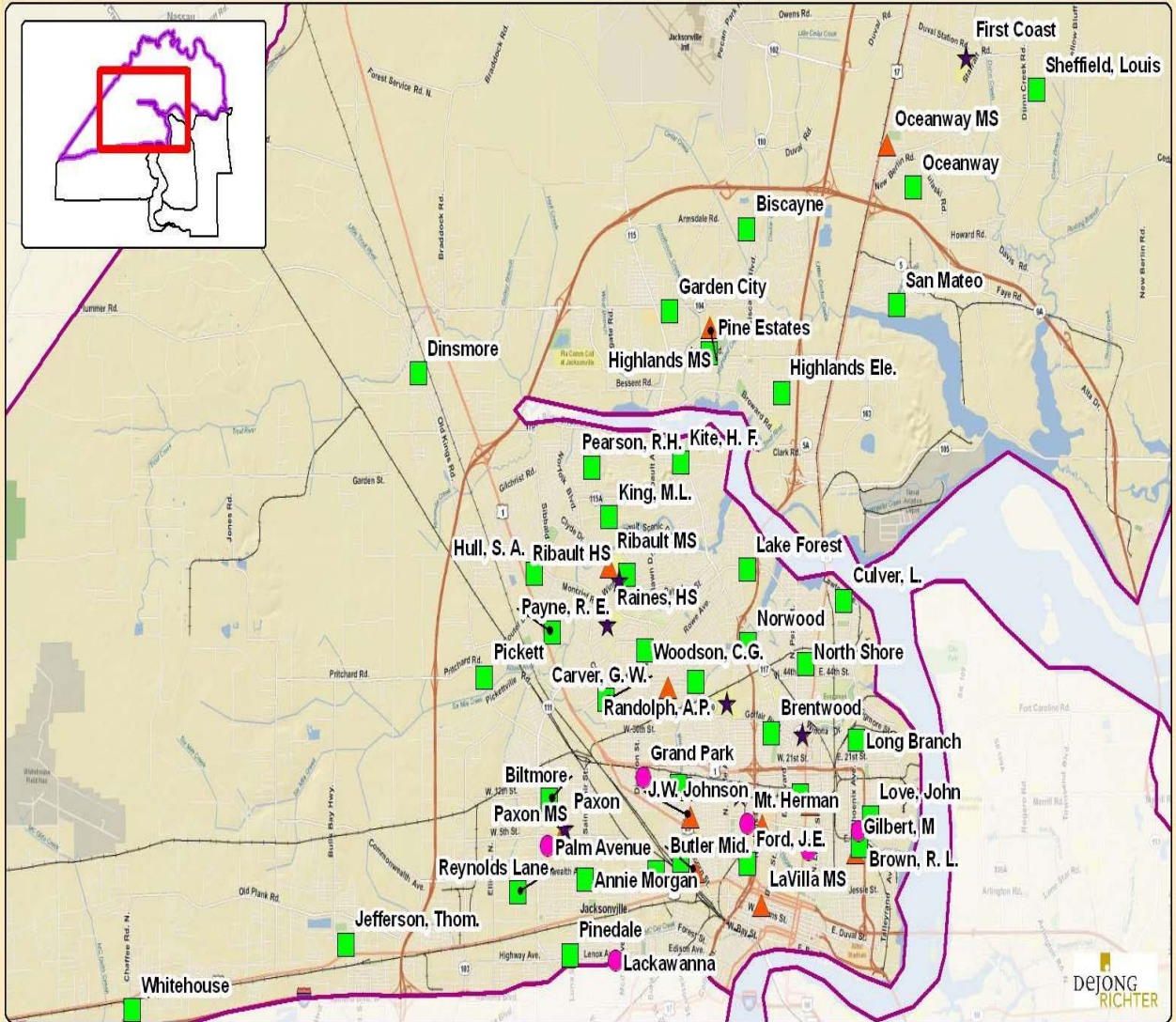
#### **V. Closing**

**Teaching. Learning. Achieving**

## DCPS CSA-Based Planning Areas



## DCPS North Planning Area



# Enrollment Trends

<b>District Wide</b>	<b>DCPS Schools Only</b>				
<b>Grade</b>	<b>Average Enroll</b>	<b>Average Proj Enroll</b>	<b>Projected Capacity</b>	<b>%</b>	<b>Surplus Seats</b>
Elementary School	61,500	64,900	71,187	91%	6,287
Middle School	26,500	27,900	30,800	91%	2,900
High School	34,000	32,100	36,985	87%	4,885
<b>Total</b>	<b>122,000</b>	<b>124,900</b>	<b>138,972</b>	<b>90%</b>	<b>14,072</b>

<b>North Area</b>	<b>DCPS Schools Only</b>				
<b>Grade</b>	<b>Average Enroll</b>	<b>Average Proj Enroll</b>	<b>Projected Capacity</b>	<b>%</b>	<b>Surplus Seats</b>
Elementary School	18,500	19,400	23,047	84%	3,647
Middle School	9,750	10,100	11,126	91%	1,026
High School	11,500	11,200	12,860	87%	1,660
<b>Total</b>	<b>39,750</b>	<b>40,700</b>	<b>47,033</b>	<b>87%</b>	<b>6,333</b>

## The Facts

- **Average Facility Condition - Districtwide of 35%.**
- **Approximate Plant Value \$2.4 Billion.**
- **Current Deficiencies - \$900M.**
- **Projected Deficiencies next 15 years \$850M.**
- **Average age of our facilities - 46 years.**
- **Under utilized schools districtwide.**  
**39 Schools at less than 75% or 14,000 empty seats**
- **Approximately 22,000 Magnet Students.**
- **Approximately 24,000 ESE Students.**
- **Stable Enrollment - 126K in 1999 vs. 126K in 2007.**

## The Facts, continued

- **Projected population growth rate in Duval County from 2005 to 2010 is 6%.**
- **Duval County population growth is occurring in the Southeast, Southwest and Northern part of the County.**
- **Population in the central part of the County is declining to no growth.**
- **Census data indicate the percentage of school age children in relationship to overall population is decreasing.**
  - **Therefore, school enrollment will not increase at the same rate as the population rate.**
- **Age distribution for Duval County children aged 0-14 to the total county population has decreased from 23.2% in 1980 to 20.6% in 2005 according to census data.**

Duval County Public Schools											
North Area											
Sch. No.	FACILITY	Enrollment - 20 Day Count			School Capacity	% Enroll / Capacity	3 yr Enroll Proj (10-11)	% Enroll / Capacity in 3 Tes.	FCI	Portables	Con-currency Service Area (CSA)
		2005-2006 Enroll	2006-2007 Enroll	2007-2008 Enroll							
3154	Ford, John E. K-8	974	893	882	676	130%	818	121%	8%	0	1
3070	North Shore Elementary-New K8 Opening June 08.	409	401	374	980	38%	910	93%	69%	0	1
3078	Biltmore Elementary	333	355	348	545	64%	355	65%	35%	7	1
3269	Biscayne Elementary	634	567	546	667	82%	640	96%	0%	0	1
3015	Brentwood Elementary	301	319	402	380	106%	370	97%	11%	0	1
3148	Brown, Richard L. Elementary	702	679	672	786	85%	702	89%	26%	4	1
3158	Carver, George Washington Elementary	456	464	432	598	72%	450	75%	38%	0	1
3013	Culver, Lola M. Elementary	249	228	268	263	102%	0	0%	103%	0	1
3162	Daniels, R. V. K-2	368	374	351	422	83%	348	82%	40%	0	1
3045	Dinsmore Elementary	519	565	627	569	110%	705	124%	56%	7	1
3124	Evans, Saint Clair Academy Elementary	548	542	487	694	70%	552	80%	13%	6	1
3059	Garden City Elementary	557	675	555	536	104%	650	121%	83%	4	1
3099	Highlands Elementary	464	453	435	518	84%	486	94%	38%	0	1
3169	Hull, S. A. Elementary	305	328	330	433	76%	292	67%	34%	0	1
3048	Jefferson, Thomas Elementary	576	584	545	555	98%	639	115%	53%	5	1
3236	Jones, Mamie Agnes Elementary	360	380	335	455	74%	406	89%	38%	0	1
3220	King, Martin Luther Elementary	546	487	536	703	76%	524	75%	22%	2	1
3037	Kite, Henry F. Elementary	365	436	413	355	116%	352	99%	49%	1	1
3074	Lake Forest Elementary	475	467	397	547	73%	470	86%	19%	0	1
3149	Livingston, Smart Pope Elementary	533	554	538	852	63%	532	62%	35%	0	1
3106	Long Branch Elementary	313	302	289	407	71%	326	80%	7%	0	1
3073	Love, John Elementary	265	262	268	294	91%	296	101%	31%	0	1
3091	Mathis, Sallye B. Elementary	315	298	286	624	46%	316	51%	10%	0	1
3021	Morgan, Annie R. Elementary	453	452	404	479	84%	470	98%	37%	6	1
3150	New Berlin Elementary		667	878	675	130%	746	111%	0%	0	7
3023	Norwood Elementary	224	192	202	259	78%	0	0%	84%	4	1
3270	Oceanway Elementary	736	638	666	680	98%	701	103%	0%	0	7
3163	Payne, Rufus E. Elementary	399	414	348	677	51%	389	57%	31%	0	1

3095	Pearson, Rutledge H. Elementary	266	255	249	469	53%	272	58%	65%	0	1
3205	Pickett Elementary	272	278	261	341	77%	304	89%	53%	2	1
3250	Pine Estates Elementary	285	312	380	444	86%	389	88%	31%	7	1
3093	Pinedale Elementary	518	460	383	828	46%	451	54%	23%	0	1
3202	Reynolds Lane Elementary	376	397	365	518	70%	384	74%	7%	1	1
3262	Robinson, Andrew A. Elementary	621	855	857	992	86%	874	88%	19%	0	1
3218	San Mateo Elementary	686	635	709	631	112%	668	106%	44%	8	7
3242	Sheffield, Louis S. Elementary	997	701	760	898	85%	780	87%	21%	14	7
3128	Tolbert, Susie E. 3-5	399	401	416	573	73%	417	73%	42%	2	1
3143	West Jacksonville Elementary	311	261	248	495	50%	281	57%	58%	1	1
3051	Whitehouse Elementary	740	781	574	530	108%	579	109%	38%	5	1
3166	Woodson, Carter G. Elementary	535	486	458	699	66%	507	73%	66%	4	1
	<b>Totals</b>	<b>7,365</b>	<b>18,798</b>	<b>18,474</b>	<b>23,047</b>	<b>80%</b>	<b>19,351</b>	<b>84%</b>	<b>36%</b>	<b>90</b>	
<b>Sch. No.</b>	<b>FACILITY</b>	<b>2005-2006 Enroll</b>	<b>2006-2007 Enroll</b>	<b>2007-2008 Enroll</b>	<b>School Capacity</b>	<b>% Enroll / Capacity</b>	<b>3 yr Enroll Proj (10-11)</b>	<b>% Enroll / Capacity in 3 Tes.</b>	<b>FCI</b>	<b>Portables</b>	<b>Concurrence Service Area (CSA)</b>
3168	Butler, Eugene J. Middle	565	490	408	1,174	35%	503	43%	40%	0	1
3145	Darnell-Cookman Middle	1,150	1,100	1,137	924	123%	1,076	116%	39%	8	1
3146	Gilbert, Matthew W. Middle	625	627	623	775	80%	648	84%	28%	0	1
3244	Highlands Middle	1,111	1,162	1,192	1,228	97%	1,166	95%	29%	8	1
3152	Johnson, James Weldon Middle	1,108	1,118	1,099	955	115%	1,100	115%	22%	6	1
3025	Kirby-Smith Middle	992	987	989	846	117%	980	116%	13%	0	1
3267	LaVilla School of the Arts	1,093	1,068	1,120	746	150%	1,041	140%	0.86%	0	1
3155	Northwestern Middle	763	740	560	918	61%	736	80%	8%	6	1
3062	Oceanway Middle	1,166	1,183	1,198	1,009	119%	1,346	133%	1%	0	1
3092	Paxon Middle	857	837	808	951	85%	851	89%	15%	0	1
3212	Ribault, Jean Middle	637	695	601	1,200	50%	631	53%	17%	9	1
	North Shore K-8				400			0%			
	<b>Totals</b>	<b>10,067</b>	<b>10,007</b>	<b>9,735</b>	<b>11,126</b>	<b>87%</b>	<b>10,078</b>	<b>91%</b>	<b>19%</b>	<b>37</b>	

Sch. No.	FACILITY	2005-2006 Enroll	2006-2007 Enroll	2007-2008 Enroll	School Capacity	% Enroll / Capacity	3 yr Enroll Proj (10-11)	% Enroll / Capacity in 3 Tes.	FCI	Portables	Concurrence Service Area (CSA)
3038	Baldwin Junior Senior High	1,023	1,044	1,196	944	127%	1,120	119%	22%	2	1
3265	First Coast Senior High	2,220	2,244	2,412	2,153	112%	2,373	110%	14%	1	7
3035	Jackson, Andrew Senior High	1,652	1,713	1,616	1,607	101%	1,550	96%	76%	9	1
3075	Paxon School SAS	1,498	1,523	1,544	1,604	96%	1,503	94%	32%	3	1
3165	Raines, William M. Senior High	1,520	1,477	1,304	1,925	68%	1,496	78%	25%	1	1
3285	Randolph, A. Philip Academy	706	740	969	1,223	79%	743	61%	41%	0	1
3096	Ribault, Jean Senior High	1,018	991	950	1,766	54%	927	52%	25%	1	1
3153	Stanton College Preparatory School	1,515	1,446	1,464	1,638	89%	1,506	92%	23%	8	1
	<b>Totals</b>	<b>11,152</b>	<b>11,178</b>	<b>11,455</b>	<b>12,860</b>	<b>89%</b>	<b>11,218</b>	<b>87%</b>	<b>32%</b>	<b>25</b>	

## Issues and Concerns

- *Academic Achievement*
- *Under Utilized Schools*
- *Community Service*
- *Shifting Demographics*
- *Declining Enrollment*
- *Overage Students*
- *Aging Facilities*
- *Excess capacity (14,000+ seats)*
- *Concurrency Requirements*
- *Legal Compliance*
  - *Class Size*
  - *NCLB/AYP*
  - *A++ Florida School Accountability*

## Issues and Concerns, continued

### ➤ *Financial Impacts*

- *Class Size*
- *School Operating Costs*
- *Facility Maintenance*
- *Transportation*
- *Security*
- *Food Service*
- *Utilities*



## *Community Input*

Questions and Comments

Survey Card

## *Adjourn*

Mr. Doug Ayars, Chief Operating Officer

**Teaching. Learning. Achieving**