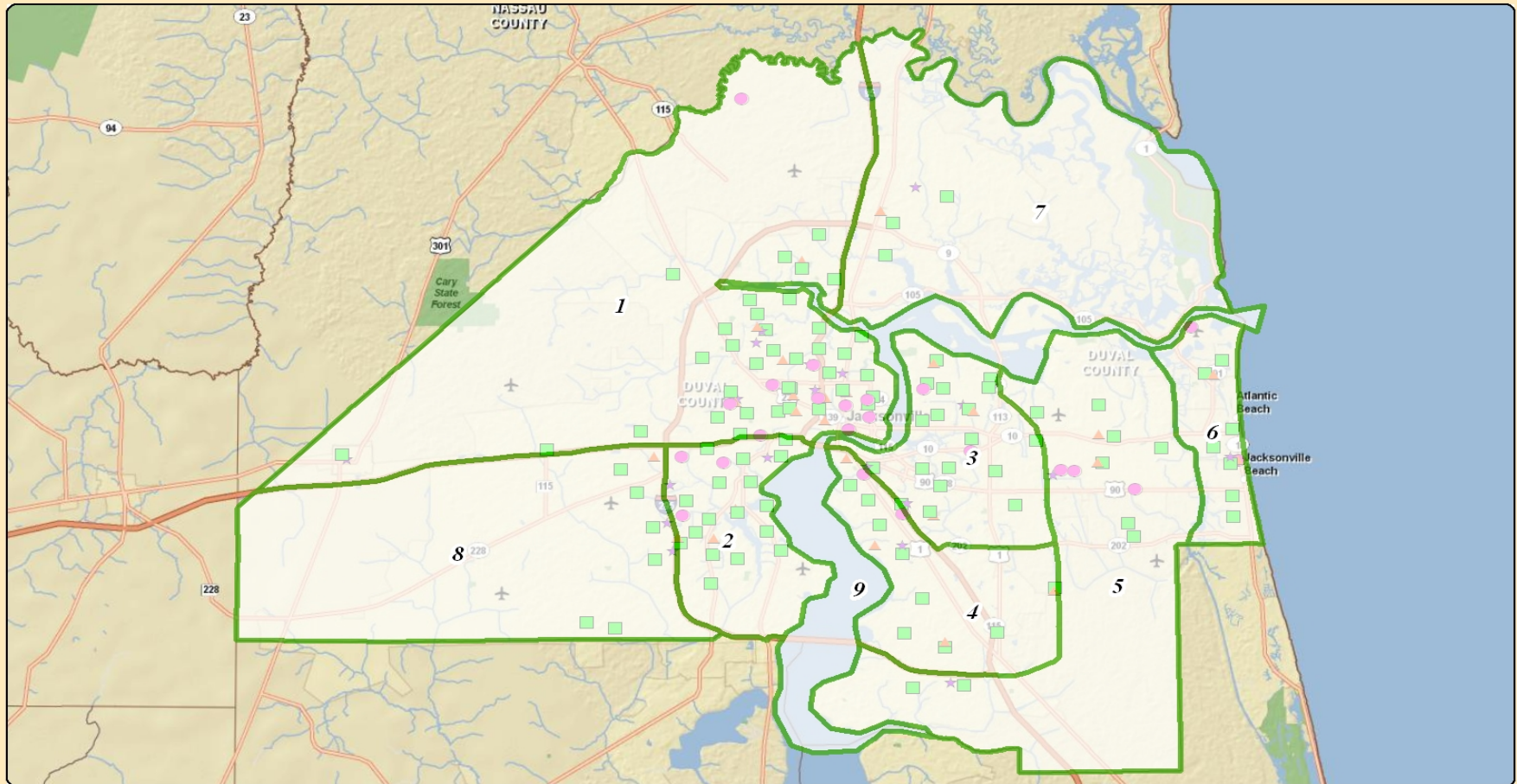


DCPS - 9 HS Concurrency Management Area Scenario



High Schools

	B	C	D	E	F	G	H	I	J	K		
	CSA #	FISH Capacity	2007/08 Enrollment	Current Utilization	Planned Additional Capacity	Concurrency Testing - Available Capacity	3 - Year Projected Enrollment State COFTE (11-12)	3 - Year Concurrency Testing - Available Capacity	5 Year Projected Enrollment State COFTE (13-14)	5 Year Utilization State COFTE (13-14)	10 Year Projected State COFTE	10 Year Utilization State COFTE
1	1	10,707	9,043	84%	0	1,664	7,587	3,120	7,628	71%	7,858	73%
2	2	3,810	4,173	110%	0	-363	3,504	306	3,271	86%	3,503	92%
3	3	4,987	4,819	97%	0	168	4,239	748	4,258	85%	4,767	96%
4	4	1,841	1,902	103%	0	-61	1,494	347	1,507	82%	1,883	102%
5	5	5,303	6,084	115%	2,200	1,419	6,165	1,338	6,493	87%	6,473	86%
6	6	2,110	2,505	119%	0	-395	2,135	-25	2,194	104%	1,888	89%
7	7	2,153	2,412	112%	0	-259	1,873	280	1,538	71%	1,330	62%
8	8	3,107	3,093	100%	0	14	3,084	23	3,189	103%	2,798	90%
9	Totals	34,018	34,031	100%	2,200	2,187	30,081	6,137	30,078	83%	30,499	84%
10	LOS @105%	35,719				3,888		7,838				
		C9*1.05				C10-D9+F9		C10-H9+F9				

*5 year Utilization Percentage Total includes 2,200 high school seats identified in DCPS CIP

	A	B	C	D	E	F	G	H	I	J	K	L		
	School Type	CSA	School Name	FISH Capacity 8/10/2007	2007-08 Enrollment	Current Utilization	Planned Additional Capacity	Concurrency Testing - Available Capacity	3 - Year Projected Enrollment State COFTE (11-12)	3 - Year Concurrency Testing - Available Capacity	5 Year Projected Enrollment State COFTE (13-14)	5 Year Utilization State COFTE (13-14)	10 Year Projected State COFTE	10 Year Utilization State COFTE
1	HS	1	Jackson, Andrew Senior High	1,607	1,616	101%		-9	1,114	493	1,169	73%	997	62%
2	HS	1	Paxon School SAS	1,604	1,544	96%		60	1,503	101	1,503	94%	1,503	94%
3	HS	1	Ribault, Jean Senior High	1,766	950	54%		816	597	1,169	586	33%	958	54%
4	HS	1	Stanton College Preparatory School	1,638	1,464	89%		174	1,506	132	1,506	92%	1,506	92%
5	HS	1	Raines, William M. Senior High	1,925	1,304	68%		621	1,300	625	1,297	67%	1,327	69%
6	HS	1	Randolph, A. Philip Academy	1,223	969	79%		254	740	483	740	61%	740	61%
7	HS	1	Baldwin Junior Senior High	944	1,196	127%		-252	827	117	827	88%	827	88%
8			High Schools Sub-Total	10,707	9,043	84%	0	1,664	7,587	3,120	7,628	71%	7,858	73%
9	LOS @105%			11,242				2,199				3,655		
				D8*1.05				D9-E8+G8				D9-I8+G8		

	B	C	D	E	F	G	H	I	J	K	L	M		
	School Type	CSA	School Name	FISH Capacity 8/10/2007	2007-08 Enrollment	Current Utilization	Planned Additional Capacity	Concurrency Testing - Available Capacity	3 - Year Projected Enrollment State COFTE (11-12)	3 - Year Concurrency Testing - Available Capacity	5 Year Projected Enrollment State COFTE (13-14)	5 Year Utilization State COFTE (13-14)	10 Year Projected State COFTE	10 Year Utilization State COFTE
1	HS	2	Lee, Robert E. Senior High	1,582	1,899	120%		-317	1,745	-163	1,565	99%	1,414	89%
2	HS	2	White, Edward H. Senior High	2,228	2,274	102%		-46	1,759	469	1,706	77%	2,089	94%
3			High Schools Sub-Total	3,810	4,173	110%	0	-363	3,504	306	3,271	86%	3,503	92%
4	LOS @ 105%			4,001				-173		497				
				E3*1.05				E4-F3+H3		E4-J3+H3				

	B	C	D	E	F	G	H	I	J	K	L	M		
	School Type	CSA	School Name	FISH Capacity 8/10/2007	2007-08 Enrollment	Current Utilization	Planned Additional Capacity	Concurrency Testing - Available Capacity	3 - Year Projected Enrollment State COFTE (11-12)	3 - Year Concurrency Testing - Available Capacity	5 Year Projected Enrollment State COFTE (13-14)	5 Year Utilization State COFTE (13-14)	10 Year Projected State COFTE	10 Year Utilization State COFTE
1	HS	3	Parker, Terry Senior High	1,949	1,855	95%		94	1,893	56	1,888	97%	1,986	102%
2	HS	3	Englewood Senior High	1,949	1,924	99%		25	1,301	648	1,325	68%	1,736	89%
3	HS	3	Anderson, Douglas Senior High	1,089	1,040	96%		49	1,045	44	1,045	96%	1,045	96%
4			High Schools Sub-Total	4,987	4,819	97%	0	168	4,239	748	4,258	85%	4,767	96%
5			LOS @105%	5,236				417		997				
				E4*1.05				E5-F4+H4		E5-J4+H4				

	B	C	D	E	F	G	H	I	J	K	L	M		
	School Type	CSA	School Name	FISH Capacity 8/10/2007	2007-08 Enrollment	Current Utilization	Planned Additional Capacity	Concurrency Testing - Available Capacity	3 - Year Projected Enrollment State COFTE (11-12)	3 - Year Concurrency Testing - Available Capacity	5 Year Projected Enrollment State COFTE (13-14)	5 Year Utilization State COFTE (13-14)	10 Year Projected State COFTE	10 Year Utilization State COFTE
1	HS	4	Wolfson, Samuel W. Senior High	1,841	1,902	103%		-61	1,494	347	1,507	82%	1,883	102%
2			High Schools Sub-Total	1,841	1,902	103%	0	-61	1,494	347	1,507	82%	1,883	102%
3	LOS @105%			1,933				31			439			
				E2*1.05				E3-F2+H2			E3-J2+H2			

*K8 @ JTB will add 800 elementary and 400 middle seats in area

	B	C	D	E	F	G	H	I	J	K	L	M		
	School Type	CSA	School Name	FISH Capacity 8/10/2007	2007-08 Enrollment	Current Utilization	Planned Additional Capacity	Concurrency Testing - Available Capacity	3 - Year Projected Enrollment State COFTE (11-12)	3 - Year Concurrency Testing - Available Capacity	5 Year Projected Enrollment State COFTE (13-14)	5 Year Utilization State COFTE (13-14)	10 Year Projected State COFTE	10 Year Utilization State COFTE
1	HS	5	Sandalwood Senior High	2,787	3,148	113%		-361	3,319	-532	3,437	123%	3,409	122%
2	HS	5	Mandarin Senior High	2,516	2,936	117%		-420	2,846	-330	3,056	121%	3,064	122%
3		5	AAA High School**				2,200	2,200		2,200				
4			High Schools Sub-Total	5,303	6,084	115%	2,200	1,419	6,165	1,338	6,493	87%	6,473	86%
5	LOS @105%			5,568				1,684				1,603		
				E4*1.05				E5-F4+H4				E5-J4+H4		

**AAA High School will add 2,200 high school seats to area

	B	C	D	E	F	G	H	I	J	K	L	M		
	School Type	CSA	School Name	FISH Capacity 8/10/2007	2007-08 Enrollment	Current Utilization	Planned Additional Capacity	Concurrency Testing - Available Capacity	3 - Year Projected Enrollment State COFTE (11-12)	3 - Year Concurrency Testing - Available Capacity	5 Year Projected Enrollment State COFTE (13-14)	5 Year Utilization State COFTE (13-14)	10 Year Projected State COFTE	10 Year Utilization State COFTE
1	HS	6	Fletcher, Duncan U. Senior High	2,110	2,505	119%		-395	2,135	-25	2,194	104%	1,888	89%
2			High Schools Sub-Total	2,110	2,505	119%	0	-395	2,135	-25	2,194	104%	1,888	89%
3	LOS@105%			2,216				-290			81			
4				E2*1.05				E3-F2+H2			E3-J2+H2			

	B	C	D	E	F	G	H	I	J	K	L	M		
	School Type	CSA	School Name	FISH Capacity 8/10/2007	2007-08 Enrollment	Current Utilization	Planned Additional Capacity	Concurrency Testing - Available Capacity	3 - Year Projected Enrollment State COFTE (11-12)	3 - Year Concurrency Testing - Available Capacity	5 Year Projected Enrollment State COFTE (13-14)	5 Year Utilization State COFTE (13-14)	10 Year Projected State COFTE	10 Year Utilization State COFTE
1	HS	7	First Coast Senior High	2,153	2,412	112%		-259	1,873	280	1,538	71%	1,330	62%
2			High Schools Sub-Total	2,153	2,412	112%	0	-259	1,873	280	1,538	71%	1,330	62%
3	LOS @105%			2,261				-151		388				
				E2*1.05				E3-F2+H2		E3-J2+H2				

	B	C	D	E	F	G	H	I	J	K	L	M		
	School Type	CSA	School Name	FISH Capacity 8/10/2007	2007-08 Enrollment	Current Utilization	Planned Additional Capacity	Concurrency Testing - Available Capacity	3 - Year Projected Enrollment State COFTE (11-12)	3 - Year Concurrency Testing - Available Capacity	5 Year Projected Enrollment State COFTE (13-14)	5 Year Utilization State COFTE (13-14)	10 Year Projected State COFTE	10 Year Utilization State COFTE
1	HS	8	Forrest, Nathan B. Senior High	1,823	1,852	102%		-29	1,876	-53	1,981	109%	1,590	87%
2	HS	8	Peterson, Frank H. Academy	1,284	1,241	97%		43	1,208	76	1,208	94%	1,208	94%
3	High Schools Sub-Total			3,107	3,093	100%	0	14	3,084	23	3,189	103%	2,798	90%
4	LOS @105%			3,262				169		178				
				E3*1.05				E4-F3+H3		E4-J3+H3				